



Технические характеристики

По вопросам продаж и поддержки обращайтесь:

Алматы (7273)495-231	Казань (843)206-01-48	Новокузнецк (3843)20-46-81	Смоленск (4812)29-41-54
Архангельск (8182)63-90-72	Калининград (4012)72-03-81	Новосибирск (383)227-86-73	Сочи (862)225-72-31
Астрахань (8512)99-46-04	Калуга (4842)92-23-67	Омск (3812)21-46-40	Ставрополь (8652)20-65-13
Барнаул (3852)73-04-60	Кемерово (3842)65-04-62	Орел (4862)44-53-42	Сургут (3462)77-98-35
Белгород (4722)40-23-64	Киров (8332)68-02-04	Оренбург (3532)37-68-04	Тверь (4822)63-31-35
Брянск (4832)59-03-52	Краснодар (861)203-40-90	Пенза (8412)22-31-16	Томск (3822)98-41-53
Владивосток (423)249-28-31	Красноярск (391)204-63-61	Пермь (342)205-81-47	Тула (4872)74-02-29
Волгоград (844)278-03-48	Курск (4712)77-13-04	Ростов-на-Дону (863)308-18-15	Тюмень (3452)66-21-18
Вологда (8172)26-41-59	Липецк (4742)52-20-81	Рязань (4912)46-61-64	Ульяновск (8422)24-23-59
Воронеж (473)204-51-73	Магнитогорск (3519)55-03-13	Самара (846)206-03-16	Уфа (347)229-48-12
Екатеринбург (343)384-55-89	Москва (495)268-04-70	Санкт-Петербург (812)309-46-40	Хабаровск (4212)92-98-04
Иваново (4932)77-34-06	Мурманск (8152)59-64-93	Саратов (845)249-38-78	Челябинск (351)202-03-61
Ижевск (3412)26-03-58	Набережные Челны (8552)20-53-41	Севастополь (8692)22-31-93	Череповец (8202)49-02-64
Иркутск (395)279-98-46	Нижний Новгород (831)429-08-12	Симферополь (3652)67-13-56	Ярославль (4852)69-52-93
Россия (495)268-04-70	Киргизия (996)312-96-26-47	Казахстан (7172)727-132	

Acquisition for GC/MS

MassHunter Acquisition Software for GC/MS Systems allows straightforward control of your Agilent MSD, triple quadrupole (TQ), and quadrupole time-of-flight (Q-TOF) GC/MS systems. It also controls the latest gas chromatography technologies, including innovative sampling techniques and dedicated GC detectors.

This data acquisition software for GC/MS unlocks the full potential of Agilent GC/MS systems in your lab by providing intuitive access to mass spectrometry. Capabilities like automated tuning and optimization allow easy instrument and method setup. Curated application focused libraries allow to automatically identify targeted and untargeted analytes.



Part Number	Description
G1617FA	GC/MSD MassHunter with MSD ChemStation Data Analysis - Upgrade to latest version of MassHunter.
G1618FA	GC/MSD MassHunter WorkStation Software - Upgrade offline data processing workstation to latest version.
G1701FA	GCMSD MassHunter with MSD ChemStation DA
G1710FA	GC/MSD MassHunter Workstation Software Offline - Upgrade to latest version.
G1717FA	GC/MSD MassHunter Offline Data Analysis Bundle.
G1729FA	GC/MSD MassHunter Bundle
G1739FA	GC/MSD MassHunter Upgrade Bundle - Upgrade to latest version of MassHunter GC/MS software.
G6841AA	MassHunter GC/MS Software for GC/TQ and GC/Q-TOF - Upgrade to latest version.
G6842AA	MassHunter GC/MS Software Bundle for GC/TQ and GC/Q-TOF - Upgrade to latest version.
G6844AA	MassHunter GC/MS Data Analysis Bundle for GC/TQ and GC/Q-TOF.
G6846AA	MassHunter GC/MS Data Analysis Software - Upgrade to latest version of MassHunter GC/MS Data Analysis Software.
G6847AA	MassHunter GC/MS Data Analysis Right to Copy.
G6849AA	MassHunter GC/MS Data Analysis Software.

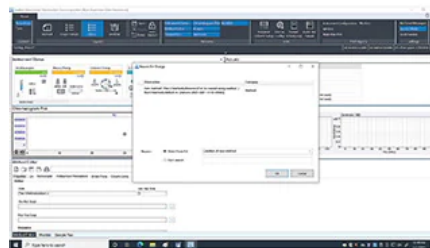
Features

- MassHunter Acquisition software for GC/MS is used across all Agilent 5977 Series GC/MSD, 7000 Series GC/TQ, and 7200 Series GC/QTOF systems, reducing the need for retraining
- Enables complete control, from tuning to report generation, while streamlining your workflows
- Software control of the High Energy Source, Low Energy Electron Impact, and Chemical Ionization source types
- Scheduling of ion source features like JetClean, which can reduce frequency of cleaning cycles when used while samples are being acquired, or during offline cleaning mode
- Sample introduction via Agilent's extensive sampler technologies including Headspace, Purge and Trap, and QuickProbe
- Optimizer software for 7000 Series GC/TQ systems seamlessly optimizes collision energies and MRM transitions of compounds using existing GC methods
- Importing worklists from spreadsheets saves time in method development and high throughput screening
- Maximized uptime and planned maintenance with Early Maintenance Feedback (EMF) that aligns and monitors GC/MS operations.
- Flow and thermally modulated comprehensive GCxGC enablement for flexibility in enhanced chromatographic resolution for selective compound detection
- Built-in technical controls combined with procedural controls ensure the security of your data, control access, and facilitate compliance as defined by US FDA 21 CFR Part 11, EU Annex 11 and similar national electronic record regulations

Acquisition for LC/MS

MassHunter acquisition software for LC/MS systems provides powerful instrument control and data acquisition. Instrument and method setup are easy and fast, with automated tuning for straightforward and reliable operation.

MassHunter Acquisition Software unleashes the power of your Agilent triple quadrupole, time-of-flight (TOF), and quadrupole time-of-flight (Q-TOF) LC/MS systems. With its intuitive design and easy-to-access instrument-specific features, it enables you to focus on sample analysis, not instrument setup.



Dialog Box for Entering Audit Trail Reasons

Part Number	Description
G3337AA	MassHunter WorkStation for LC/QQQ SW - Upgrade to latest version.
G3338AA	MassHunter Workstation Offline Software - Upgrade to latest version.
M5960AA	MassHunter Workstation for LC/TOF and LC/Q-TOF.
M5961AA	MassHunter Workstation for LC/TOF and LC/Q-TOF - Upgrade to latest version.
M5970AA	MassHunter Networked Workstation for LC/TOF and LC/QTOF.
M5971AA	MassHunter Networked Workstation for LC/TOF and LC/QTOF - Upgrade to latest version.
M6010AA	MassHunter Workstation Data Analysis Software for LC/MS.
M6020AA	MassHunter Networked Workstation Data Analysis Software.

Features

- MassHunter acquisition software is used across all Agilent 6200 Series LC/TOF, Ultivo, 6400 Series triple quadrupole and 6500 Series Q-TOF LC/MS systems, reducing the need for training
- Meeting data integrity standards - Provides the technical controls to securely acquire, process, report and store data in laboratories that must follow the compliance guidelines of FDA 21 CFR Part 11, EU Annex 11, GAMP5 as well as ISO/IEC 17025 and EPA's 40 CFR Part 160
- Importing worklists from spreadsheets saves time in method development and high-throughput screening
- Optimizer software for Ultivo and 6400 Series triple quadrupole LC/MS systems seamlessly optimizes ion source parameters and MRM transitions of compounds by infusion, flow injection, or chromatographic separation
- Study Manager for Ultivo and 6400 Series triple quadrupole LC/MS systems enables queue management of worklists submitted to the instrument
- Optional acquisition add-on software packages such as RapidFire and StreamSelect are supported
- Agilent's proprietary SWARM autotune quickly and easily tunes the instrument to its peak performance
- All Ions MS/MS Technique for targeted and untargeted screening on TOF and Q-TOF LC/MS
- Interactive MS/MS increases data quality of Q-TOF LC/MS by focusing on what matters
- Supports optional MassHunter WalkUp software for TOF and Q-TOF LC/MS systems which enables anyone to submit a sample to a HRAM instrument

Qualitative Analysis

MassHunter Qualitative Analysis is feature-rich mass spec screening software for the confirmation of target or suspect compounds, and for the identification of unknown analytes. The software is part of the MassHunter suite, which supports a wide range of mass spec identification analyses. A single, consistent user interface across all Agilent mass spec platforms minimizes training requirements and reduces operator errors.

Advanced data mining and processing options let you rapidly and accurately find all detectable compounds and easily confirm targets or identify unknowns. Results can be displayed using fast, flexible data reporting with either preconfigured reports that simplify basic analyses, or completely customized PDF reports.



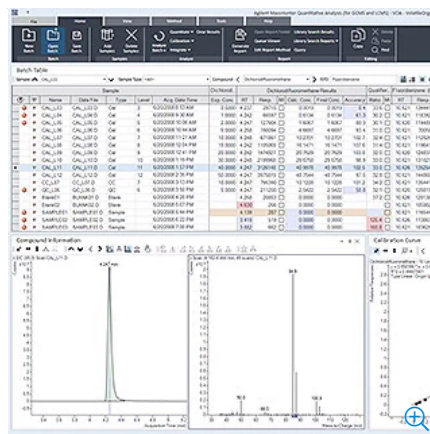
Features

- Inspect and annotate total/selected ion chromatograms and mass spectra
- Identify compounds by molecular formula and MS or MS/MS library search
- Set up and run a target/suspect screening workflow
- Calculate and report sample purity with the Find-by-Formula algorithm
- Find unknown compounds in a sample using Molecular Feature Extractor (MFE)
- Create and run custom mass spec identification workflows
- Design and generate custom PDF reports of sample results using Report Builder

Quantitative Analysis

MassHunter Quantitative Analysis is the industry-leading quantitative software for mass spectrometry in pharma, food, environmental, energy, and forensic toxicology testing. The software is part of the MassHunter suite, which supports identification and quantitation of compounds using GC/MS or LC/MS.

Samples and compounds are organized in batches for fast review and analysis. This allows for high-level review of cross-sample quality conformance and simple identification of exceptions. Individual samples can be interrogated and manually integrated if necessary. Predefined reports streamline high-throughput workflows, while custom reports address specific business or regulatory needs.



MassHunter Quantitative Analysis

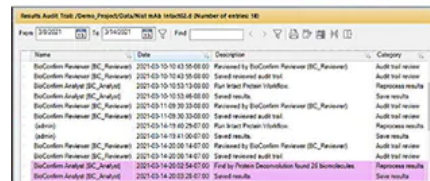
Features

- Compatible with Agilent GC/MSD, GC/TQ, GC/Q-TOF, LC/TQ, and LC/Q-TOF
- Meeting data integrity standards - Provides the technical controls to securely acquire, process, report and store data in laboratories that must follow the compliance guidelines of FDA 21 CFR Part 11, EU Annex 11, GAMP5 as well as ISO/IEC 17025 and EPA's 40 CFR Part 160
- Quant-My-Way features a user-configurable quant interface specific to the target workflow
- LC/Q-TOF and GC/Q-TOF Screener tool allows rapid absolute and relative quantitation of known and suspect compounds with clear labeling for compounds needing review
- Unknowns Analysis package provides qualitative insights for GC/MSD and GC/Q-TOF
- Batch-at-a-Glance allows the user to analyze, quantitate, and integrate in a single view
- Method Editor helps the user build methods through configuration or data import, calibration allows the user to find the best fit for standards and apply to samples, and parameter-free integrators reduce manual integration efforts
- Review by Exception provides quick identification of non-conforming samples based on user criteria
- Flexible reporting offered through report templates or custom reports using Report Builder
- Documented Software Development Kit (SDK) is available for developing bespoke applications or customizing quantitation exactly to your needs

BioConfirm Software

Agilent MassHunter BioConfirm software enables routine characterization of proteins through easy-to-use workflows for intact protein analysis, peptide mapping, and routine glycan profiling. This biopharma workflow software is part of a comprehensive solution for characterizing biopharmaceutical products such as monoclonal antibodies. With advanced security features and built-in technical controls, BioConfirm Networked Workstation minimizes security risks while helping to preserve data integrity.

From automated sample preparation to separation and detection through to data analysis and reporting, Agilent's biopharma workflow provides the most sophisticated analyses. Tools like the drug-to-antibody (ADC) ratio calculator, flexible report templates, and integrated operation with MassHunter WalkUp bring expert LC/MS capabilities to non-experts.



MassHunter BioConfirm Results Audit Trail

Part Number	Description
G4994AA	ADC DAR Calculator Upgrade
M6025AA	MassHunter BioConfirm Workstation Software
M6026AA	MassHunter BioConfirm Workstation - Upgrade to latest version
M6027AA	Additional Licenses for MassHunter BioConfirm Workstation Software

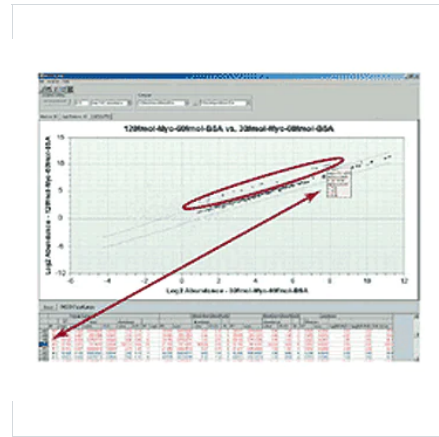
Features

- Meeting data integrity standards - Provides the technical controls to securely acquire, process, report and store data in laboratories that must follow the compliance guidelines of FDA 21 CFR Part 11, EU Annex 11, GAMP5 as well as ISO/IEC 17025 and EPA's 40 CFR Part 160
- For intact protein analysis, rapidly deconvolute your intact protein data to determine molecular weights and confirm post-translational modifications (PTMs)
- For peptide mapping, perform sequence confirmation with confidence and review multiple samples (for example, different digest enzymes) at the same time using our Sequence Coverage Map
- The released glycans workflow relies on a curated database for glycans for easy setup of the analysis, and accommodates many commercial and custom tags
- MassHunter WalkUp provides sample submitters access to expert LC/MS capabilities without requiring them to be LC/MS experts

Mass Profiler Software

Mass Profiler software allows comparisons between two individual samples or two sample groups. This multivariate analysis mass spec software helps you investigate sample or sample group similarities and differences and perform sample classification using Principal Component Analysis (PCA).

MassProfiler is specifically designed for expression profiling applications such as biomarker discovery. It uses a unique feature extraction and correlation algorithm, excelling at locating all the components in even very complex peptide mixtures.



Part Number ▾	Description
G3297AA	Mass Profiler Biomarker Discovery Software
G9298AA	Mass Profiler Biomarker Discovery Software - Upgrade to latest version

Features

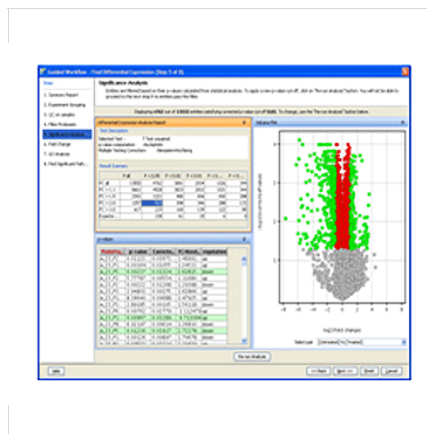
- Unique feature extraction and correlation algorithm locates molecular features, not just chromatographic peaks
- Visualization tools allow the identification of statistically meaningful differences between sample groups (e.g., different origins of apples)
- Calculates abundance ratios and clearly identifies differentially expressed features
- Flexible feature selection allows user selection of comparison criteria
- Supports additional workflows including pharmaceutical impurity analysis and food & environmental analysis
- For LC/Q-TOF and GC/Q-TOF data

Mass Profiler Professional Software

RUO

Agilent Mass Profiler Professional (MPP) software is a chemometrics platform for exploiting the high information content of MS data and can be used in any MS-based differential analysis to determine relationships among two or more sample groups and variables. It provides advanced statistical analysis and visualization tools for GC/MS, LC/MS, CE/MS, and ICP-MS data.

MPP is the only platform that provides integrated identification/annotation of compounds and integrated pathway analysis for metabolomics and proteomics studies. Automated sample classification is enabled by the available MassHunter Classifier tool, which revolutionizes MS-based qualitative analysis of unknown samples.



Part Number	Description
G3835AA	Mass Profiler Professional (MPP)
G3836AA	Pathway Features for MPP
G6850AA	Mass Profiler Professional (MPP) for GC/MS
G9274AA	Mass Profiler Professional (MPP) - Upgrade to latest version
G9275AA	Pathway Features for MPP - Upgrade to latest version
G9282AA	Mass Prof Pro (MPP) Concurrent Lic Upgr

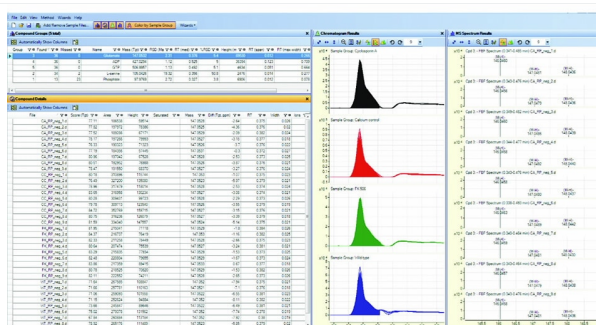
Features

- Allows differential analysis of two or more sample sets from one or multiple MS analysis platforms in a single project
- Designed for both mass spectrometrists and statisticians, with guided and advanced workflows
- Provides comprehensive statistical tools including ANOVA, PCA, volcano plots, hierarchical trees, SOMs, and multiple methods for class prediction
- Generates inclusion list for subsequent MS/MS-based analyses to facilitate identification of compounds of interest
- The ID Browser allows integrated identification and annotation of compound using LC/MS Personal Compound Databases (METLIN, Pesticides, Forensics) and GC/MS libraries (NIST and Agilent Fiehn Metabolomics)
- MPP integrates well with MassHunter Profinder, Lipid Annotator and Classifier – find out more under How It Works
- Method automation capability in MPP enables the user to automate the complete analysis steps including experiment creation, normalization, data filtering and statistical analysis
- Allows import and export of data in several formats to further extend and customize statistical analysis and visualization capabilities using R-Scripts
- MPP 15.0 integrated with GeneSpring GX allows the correlation of pathways between MS (metabolomics, proteomics) and genomics data (microarray and NGS) in one project, enabling true integrated biology studies

How It Works

MassHunter Profinder

MassHunter Profinder is a fast, batch-processing feature extraction software for differential analysis that supports data from Agilent GC/MSD, GC/Q-TOF, LC/TOF and LC/Q-TOF instruments. Profinder finds more compounds using Agilent's unique recursive untargeted feature-finding algorithm. Profinder also supports qualitative flux analysis using a cutting-edge extraction algorithm for targeted stable label isotope data mining that includes background correction and isotopologue incorporation display.

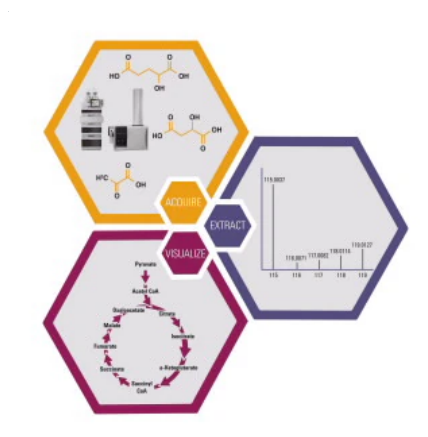


VistaFlux Software RUO

MassHunter VistaFlux software is designed to meet the challenges of qualitative flux analysis. Using both static and animated pathway visualizations, it enables easy interpretation and explanation of the results of the experiments conducted using Agilent time-of-flight and quadrupole time-of-flight LC/MS systems.

This flux analysis mass spec software easily finds targeted metabolites within stable isotope labeled data, and displays results using advanced pathway visualization software. In addition, it exports figures for presentations and generates reports, making the complete workflow easy and fast.

For Research Use Only. Not for use in diagnostic procedures.



Part Number	Description
G4992AA	MassHunter VistaFlux Software

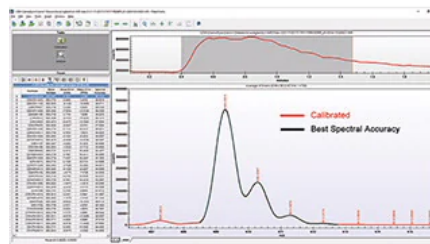
Features

- Extend the power of your metabolomics research by studying the metabolic network in motion.
- Speed up your analysis using an integrated workflow for processing isotopologue data.
- Quickly create target lists, extract batch isotopologues, and visualize results on pathways.
- Review and edit isotopologue results with ease using our intuitive interface.
- Interpret results and communicate with colleagues using pathway images and videos of qualitative fluxes.
- Easily import KEGG or BioCyc content to build pathway models.
- Create confidence in your results using t-test and ANOVA statistics on isotopologue data

MassWorks Software

Cerno Bioscience's MassWorks MS calibration technology is a software that seamlessly allows for high mass and spectral accuracy on unit mass instruments. This novel approach enables confident identification of unknowns by using both accurate mass and exact isotope modeling, and easy calibration of raw MS data.

This advanced technology makes accurate mass molecular formula generation significantly more affordable for industries like pharmaceutical, chemical, consumer product, food safety, and organic synthesis laboratories. Ensure the accuracy of your analysis through Agilent LC/MS and GC/MS systems with the MassWorks MS calibration technology.



Part Number	Description
G5378AA	MassWorks Accurate Mass Software for GC/MSD - Upgrade to latest version.

Features

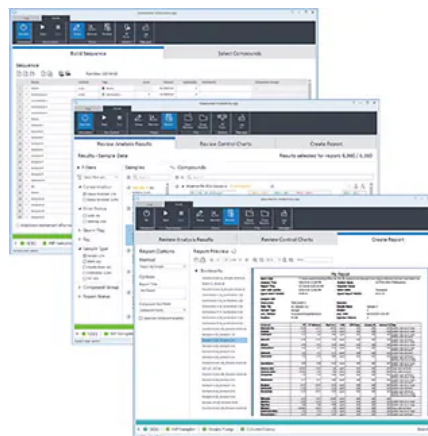
- Achieve high mass accuracy for unknowns analysis when used with Agilent InfinityLab LC/MSD, LC/MSD XT, or 5977B GC/MSD
- This cost-effective solution for elemental composition determination can be executed on a single quadrupole instrument and does not require the purchase of a high res accurate mass system
- Straightforward PFTBA tune gas setup for push-button calibration using AutoCal
- Increase mass accuracy by up to 100x
- Attain up to 99% spectral accuracy for high-confidence compound ID
- Fully integrated with NIST library search for compound ID

Simplified Interfaces

Productivity App for Targeted Pesticides Screening by LC/TQ

MassHunter Productivity Application Software combines data acquisition and data review into a single user interface for enhanced productivity of your targeted pesticide screening by LC/TQ.

Maximize technician productivity and reduce time wasted at the PC using software specifically designed for your targeted screening workflows. Get the functionality you need, packaged for maximum efficiency.



Streamlined quantitation from start to finish

| Features

- Quickly start up with a comprehensive kit that includes Productivity Application software for targeted pesticides screening, comprehensive guides, acquisition method and MRM database, report templates, and optional consumables for pesticides analysis
- Reduce sequence setup time and avoid data entry errors using sequence templates specific to your needs
- Reduce data review bottlenecks and dramatically improve efficiency with filter sets and compound groups
- Reduce training overhead with an intuitive and modern interface, context-sensitive tooltips, extensive user input validation, and color-coded warning messages

WalkUp Software

Agilent WalkUp Software makes the complex simple. Users walk up to a LC or LC/MS system, identify themselves, input basic sample information, choose from a list of analytical methods or purification workflows, and are prompted where to place their samples. Results are sent by e-mail when sample runs are completed. This simplified mass spec software enables easy access for multiple users to the power and precision of LC and LC/MS.

The user-friendly WalkUp interface enables fast, intuitive, and error-free operation not only of LC, low-resolution LC/MS, UV and mass-directed fraction collection systems, but also of high-resolution mass spectrometers typically operated by specialists. WalkUp minimizes time spent in the lab while optimizing instrument utilization for users of shared instruments. Multiple instruments can be networked through an OpenLab Shared Services Server to allow monitoring and administration from anywhere at any time.

Part Number	Description
G2725CA	MassHunter WalkUp Software.
G2725DA	MassHunter WalkUp Software with Touchscreen and Card Reader.

Features

- One simple sample submission interface enables minimally trained users to submit samples to OpenLab CDS 2.X, OpenLab CDS ChemStation, and MassHunter for LC/TOF and LC/Q-TOF.
- WalkUp supports InfinityLab LC, 6100 Series Quadrupole LC/MS, LC/MSD, LC/MSD XT, LC/MSD iQ, 6230 Time-of-Flight LC/MS, and 6500 Series Quadrupole Time-of-Flight LC/MS systems.
- Optional external tray enables automatic vial discard with vial autosamplers, eliminating the need to manually clear the autosampler and reducing administrator tasks.
- Support of card readers for touch-free user identification.
- Customizable sample naming as well as regular expression sample naming enable error-free sample submissions, minimizing time spent in labs where occupancy may be limited.
- Support of fraction collectors including 1290 Infinity II Preparative Open-bed Sampler/Collectors enabling simultaneous UV or mass-directed purification and compound confirmation on 6100 series Single Quadrupole LC/MS LC/MSD, and LC/MSD XT systems.
- Optimized sample queue management allows fast submission of samples for shorter cycle times.
- Flexible tools allow administrators to customize the sample submission user interface and establish protocols that match laboratory needs and ensure instruments remain operational even when in use by minimally trained sample submitters.
- Multiple-instrument networking configuration enables all systems to share permissions, WalkUp methods, and user account structures from a single database, reducing management of instrument-specific configuration and administration.
- Data and reports are automatically copied or e-mailed to sample submitters, without the need to return to the instrument. Users can review data anywhere using MassHunter Analytical Studio Reviewer.

По вопросам продаж и поддержки обращайтесь:

Алматы (7273)495-231	Казань (843)206-01-48	Новокузнецк (3843)20-46-81	Смоленск (4812)29-41-54
Архангельск (8182)63-90-72	Калининград (4012)72-03-81	Новосибирск (383)227-86-73	Сочи (862)225-72-31
Астрахань (8512)99-46-04	Калуга (4842)92-23-67	Омск (3812)21-46-40	Ставрополь (8652)20-65-13
Барнаул (3852)73-04-60	Кемерово (3842)65-04-62	Орел (4862)44-53-42	Сургут (3462)77-98-35
Белгород (4722)40-23-64	Киров (8332)68-02-04	Оренбург (3532)37-68-04	Тверь (4822)63-31-35
Брянск (4832)59-03-52	Краснодар (861)203-40-90	Пенза (8412)22-31-16	Томск (3822)98-41-53
Владивосток (423)249-28-31	Красноярск (391)204-63-61	Пермь (342)205-81-47	Тула (4872)74-02-29
Волгоград (844)278-03-48	Курск (4712)77-13-04	Ростов-на-Дону (863)308-18-15	Тюмень (3452)66-21-18
Вологда (8172)26-41-59	Липецк (4742)52-20-81	Рязань (4912)46-61-64	Ульяновск (8422)24-23-59
Воронеж (473)204-51-73	Магнитогорск (3519)55-03-13	Самара (846)206-03-16	Уфа (347)229-48-12
Екатеринбург (343)384-55-89	Москва (495)268-04-70	Санкт-Петербург (812)309-46-40	Хабаровск (4212)92-98-04
Иваново (4932)77-34-06	Мурманск (8152)59-64-93	Саратов (845)249-38-78	Челябинск (351)202-03-61
Ижевск (3412)26-03-58	Набережные Челны (8552)20-53-41	Севастополь (8692)22-31-93	Череповец (8202)49-02-64
Иркутск (395)279-98-46	Нижний Новгород (831)429-08-12	Симферополь (3652)67-13-56	Ярославль (4852)69-52-93
Россия (495)268-04-70	Киргизия (996)312-96-26-47	Казахстан (7172)727-132	

afr@nt-rt.ru || <https://agilent.nt-rt.ru/>