

Технические характеристики

По вопросам продаж и поддержки обращайтесь:

Алматы (7273)495-231
Архангельск (8182)63-90-72
Астрахань (8512)99-46-04
Барнаул (3852)73-04-60
Белгород (4722)40-23-64
Брянск (4832)59-03-52
Владивосток (423)249-28-31
Волгоград (844)278-03-48
Вологда (8172)26-41-59
Воронеж (473)204-51-73
Екатеринбург (343)384-55-89
Иваново (4932)77-34-06
Ижевск (3412)26-03-58
Иркутск (395)279-98-46
Россия (495)268-04-70

Казань (843)206-01-48
Калининград (4012)72-03-81
Калуга (4842)92-23-67
Кемерово (3842)65-04-62
Киров (8332)68-02-04
Краснодар (861)203-40-90
Красноярск (391)204-63-61
Курск (4712)77-13-04
Липецк (4742)52-20-81
Магнитогорск (3519)55-03-13
Москва (495)268-04-70
Мурманск (8152)59-64-93
Набережные Челны (8552)20-53-41
Нижний Новгород (831)429-08-12
Киргизия (996)312-96-26-47

Новокузнецк (3843)20-46-81
Новосибирск (383)227-86-73
Омск (3812)21-46-40
Орел (4862)44-53-42
Оренбург (3532)37-68-04
Пенза (8412)22-31-16
Пермь (342)205-81-47
Ростов-на-Дону (863)308-18-15
Рязань (4912)46-61-64
Самара (846)206-03-16
Санкт-Петербург (812)309-46-40
Саратов (845)249-38-78
Севастополь (8692)22-31-93
Симферополь (3652)67-13-56
Казахстан (7172)727-132

Смоленск (4812)29-41-54
Сочи (862)225-72-31
Ставрополь (8652)20-65-13
Сургут (3462)77-98-35
Тверь (4822)63-31-35
Томск (3822)98-41-53
Тула (4872)74-02-29
Тюмень (3452)66-21-18
Ульяновск (8422)24-23-59
Уфа (347)229-48-12
Хабаровск (4212)92-98-04
Челябинск (351)202-03-61
Череповец (8202)49-02-64
Ярославль (4852)69-52-93

SpectrAA Software

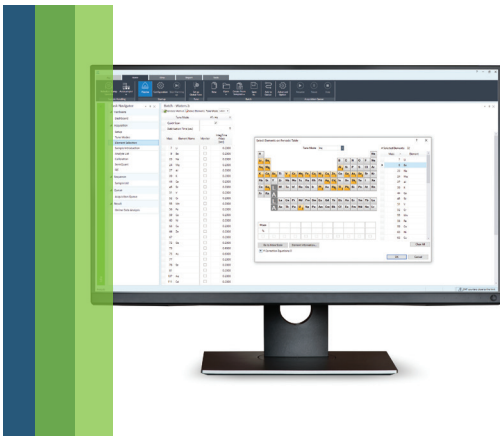
Agilent SpectrAA Software is user-friendly software that provides access to all instrument controls, sample results, and signal graphics from one window. The intuitive user interface accommodates users of all skill levels, and the PROMT measurement mode can reduce sample analysis time and increase productivity. SpectrAA Software also includes a suite of useful workflow capabilities, including simple method development, powerful reporting options, tracking of consumables usage, and compliance support for regulated industries.

SpectrAA software is available as SpectrAA Base, SpectrAA Pro with extra quality control capabilities, and SpectrAA CFR for pharmaceutical laboratories.



| Features

- Simple method development with the Surface Response Methodology (SRM) wizard
- Reduce downtime and running costs by tracking the operating lifetime of key consumables such as lamps, electrodes, and pump tubing
- Display a variety of results, including final concentrations or raw signals
- Color-coded results can highlight out-of-range results, uncalibrated results, or other errors
- Report sample results in units independent of those used for calibration, and create reports in sequential or multi-element formats
- Use RANDOM sample function to schedule urgent sample measurement immediately after the current sample is complete, then resume normal sequence
- Simplify label entry with autocopy and unique pattern recognition, read barcoded samples directly, and import labels from laboratory information management systems (LIMS)
- All current US EPA tests are built in to help ensure EPA compliance
- Built-in technical controls ensure the security of your data, control access, and facilitate compliance as defined by US FDA 21 CFR Part 11, EU Annex 11 and similar national electronic record regulations.



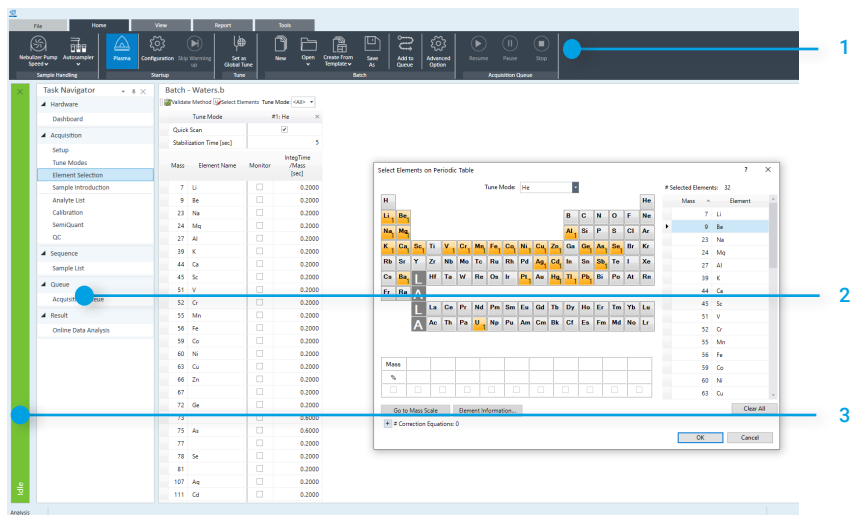
ICP-MS MassHunter Software

Version 5.1

Major update delivers significant functionality changes

The Agilent ICP-MS MassHunter software version 5.1 includes a redesigned user interface that can reduce operator training requirements and simplify routine and advanced ICP-MS operation. The software also features several smart functions that address common ICP-MS time traps.

Redesigned user interface



The redesigned user interface features: 1. Ribbon bar provides user-friendly access to all functions. 2. A task navigator that maps to a typical workflow. 3. A color-coded status bar that conveys instrument status at a glance.

New functionality

Included in version 5.1 is important new functionality:

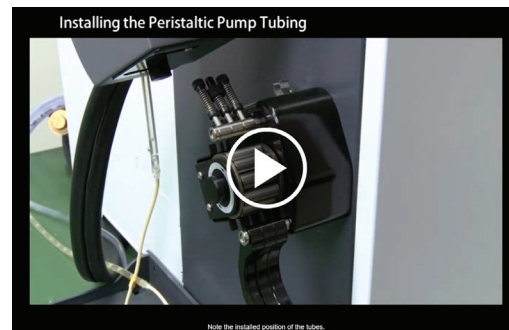
- An early maintenance feedback function monitors instrument status and notifies you when maintenance will be needed, based upon several metrics such as operation time or number of samples measured. Traffic light color-coded alerts mean that tasks—such as changing pump tubing, or cleaning the cones— can be scheduled and are never missed. Using the alerts also ensures the tasks are not performed more frequently than necessary
- Pre- and post run performance checks provide confidence in results and prevent unplanned downtime. A post run check at the end of the day flags potential issues, so you can address them—before they impact your work the next day
- Outlier conditional formatting highlights results that are outside a nominated range or that fail a test requirement. Color-coding makes it easy to spot problematic results when reviewing data
- Video guides for common installation, maintenance, and troubleshooting tasks are provided in an extensive Help and Learning Center. It's all designed to equip the analyst with the knowledge to keep the instrument up and running flawlessly
- The IntelliQuant feature quickly captures a full mass spectrum to create a profile of each sample's composition. You can then identify abnormal levels of major elements, unexpected analytes and the level of solids in the sample

Combined with upgraded existing functionality:

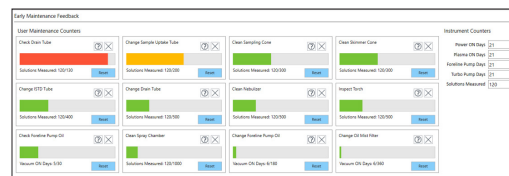
- Accelerate methods development with predeveloped methods, or guided method development to fully setup methods for more challenging samples
- Doubly charged interference correction improves data quality by correcting for unexpected interferences from rare earth elements
- Fully-featured yet simple data analysis, regardless of application: quantitation, chromatographic, FFF, single particle/cell, isotope and solid (e.g. LA) analysis
- Flexible data handling and report generation simplifies reporting. Data can be exported in a range of formats, including integration with LIMS
- Built-in technical controls ensure the integrity of your data, control access, and facilitate compliance as defined by US FDA 21 CFR Part 11, EU Annex 11 and equivalent regulations in other countries.

Compatibility

Agilent MassHunter version 5.1 is compatible with the Agilent 7700, 7800, 7850, and 7900 ICP-MS, 8800 and 8900 ICP-QQQ instruments.



Online videos provide step-by-step instructions on how to do common setup and maintenance tasks.

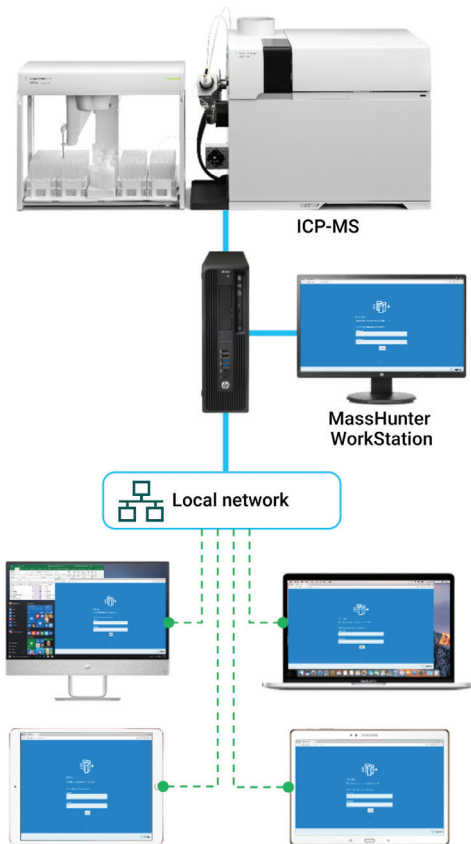


The early maintenance feedback function uses sensors and counters to determine when maintenance is needed, based on operation time or number of samples measured. The traffic light color-coded alerts indicate when maintenance tasks are required.



Agilent ICP Go Software

Elemental analysis made easy



Use ICP Go to control your entire analysis on the local workstation with ease. If it's connected to the local network, you can take advantage of full control from any compatible Windows, OSX, Android or iOS device.

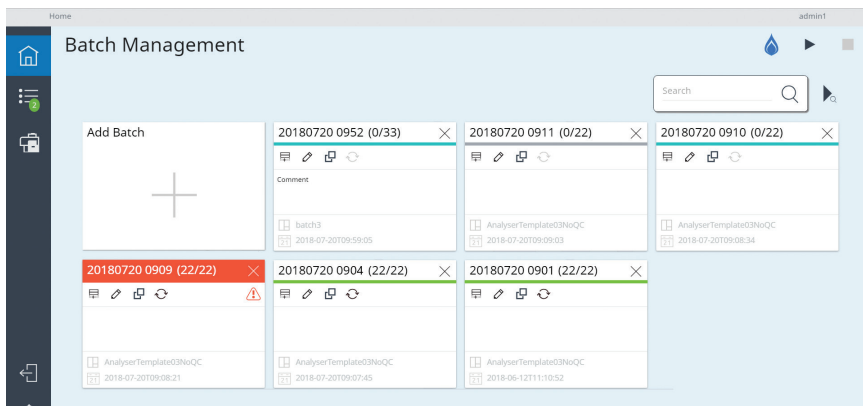
Focus on the essentials

ICP Go is a simple, browser-based software interface that makes the routine operation of your Agilent ICP-MS easier than ever. It is compatible with Agilent 7700, 7800, 7850, 7900 ICP-MS and 8900 ICP-QQQ instruments and allows new or occasional users to run an analysis with confidence.

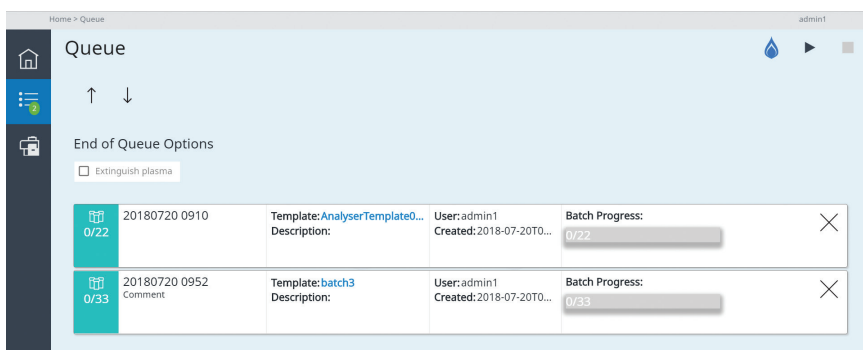
With ICP Go you can:

- Quickly set up and run sample batches from stored templates.
- Achieve a high level of control over batches and reduce the possibility of method errors that can cause inconsistent results and costly reruns.
- Control your entire analytical run, from igniting the plasma through to analyzing samples. During a run, you can easily queue urgent samples for immediate analysis, and monitor the instrument status remotely.
- Train new users in less than a day, which reduces the costs of initial training and makes it much easier for operators to transfer between analytical techniques. ICP Go's clear screen layout and simple workflow enable easy crosstraining of analysts, giving you more staffing flexibility, meaning that your senior analysts can focus on more advanced tasks, such as optimizing lab efficiency.

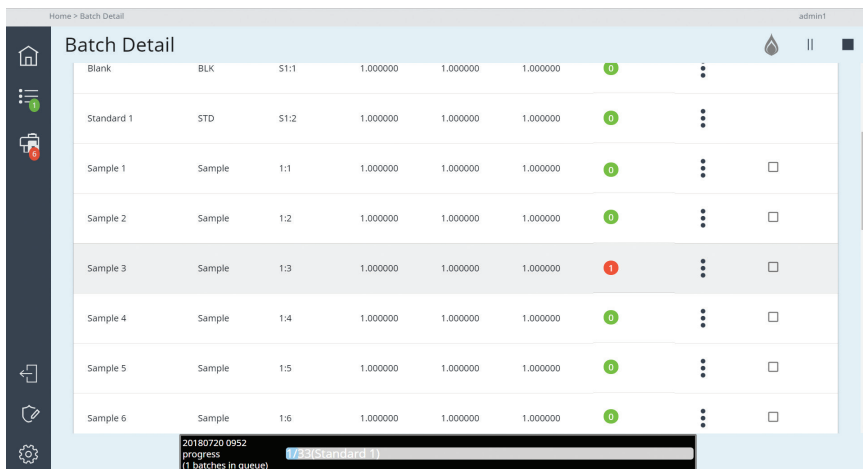
ICP Go can control the instrument directly on the same PC as ICP-MS MassHunter via Edge or Chrome browsers. Should the control PC be connected to the local network, it is possible to log in to the ICP Go session from a remote, but connected device. As the interface is based upon browser technology, most devices with Edge or Chrome browsers can be used on Windows, OSX, Android and iOS operating systems. Several instruments can be easily connected to from an individual device using separate browser tabs.



Step 1. Create a new batch of samples by selecting the method template and importing or entering the sample names.



Step 2. Add the batch to the queue for analysis. The status of each batch in the queue is displayed onscreen.



Step 3. Color-coded flags show the run status, allowing easy identification of errors, such as QC failures.

Analyze samples in 3 steps

After loading samples into the autosampler, analyzing them requires only three steps:

1. Create a new batch by importing or entering the sample names into your chosen method template.
2. Add the batch to the Queue. You can change the order of batches, if necessary. Analysis of queued batches starts automatically if the Queue is already running. Otherwise, click the Start icon to run the new batch.
3. You can monitor the status of the analysis using the color-coded flags, displayed during the run and Internal Standard stability charts.

Compatibility

ICP Go is compatible with:

- Agilent 7700, 7800, 7850, 7900 ICP-MS and 8900 ICP-QQQ instruments
- ICP-MS MassHunter version 4.6 or later, running on Microsoft Windows 10 operating system, version 1703 or later
- Agilent ASX 520 autosampler
- Agilent I-AS autosampler
- Agilent SPS 4 autosampler

Ordering information

ICP Go is included with the Agilent 7850 ICP-MS Analyzer package and can be added to existing Agilent ICP-MS instruments.

ICP-MS Software

ICP-MS Control Pack

In response to requests from users, the User Access Control Pack software strengthens and enhances the security of ICP-MS MassHunter (or ChemStation) software for ICP-MS system auditing and access management.



| Features

- Control three levels of user access with administrator-controlled permission and separate log on for each level
- Change users during automated sequencing or other long operations
- Prevent unauthorized access while current user is away, with operating system lock function
- Record user(s) logon/logoff to operating system (supported OS function) and MassHunter or ChemStation logon
- Store log of user name, instrument name, serial number, tune file name, and time stamp with all data files and reports

ICP-MS Software

ICP-MS Plasma Chromatographic Software

Agilent ICP-MS Plasma Chromatographic Software seamlessly integrates Agilent ICP-MS systems with chromatography instrumentation. Developed by Agilent, this optional software handles chromatographic data with powerful integration, calibration, and quantification capabilities.

The Plasma Chromatographic Software is more than a just data analysis package though. It is fully integrated into the ICP-MS MassHunter and ChemStation software, so you can set up sample sequences and perform automated chromatography, run real-time ICP-MS data acquisition and analysis, and perform real-time QC actions such as retention time recalibration.



| Features

- Display and manipulate data with powerful graphics
- Integrate peak search, shoulder detection, and peak smoothing routines
- Perform a range of quantitative operations, including weighting and internal standardization
- Confirm target analytes with automatic qualifier ion identification
- Synchronize chromatograph and Agilent ICP-MS data acquisition automatically for genuine unattended sequence analysis
- Automated chromatography-ICP-MS analysis, with real-time data analysis and output
- Calibrate retention time in real time
- Edit sample sequences, including insertion of rush samples

ICP-MS Software

ICP-MS Intelligent Sequencing Software

Agilent Intelligent Sequencing for MassHunter (or ChemStation) allows users to take control of run-time quality assurance by evaluating real-time data quality. The software compares measured results against expected values and takes appropriate QC actions, and is delivered with a set of preconfigured templates to help you meet US EPA 200.8, 6020, and other internationally regulated requirements.

The software can be easily tailored to meet specific QA/QC requirements and produce custom protocols by the addition of quality control samples and criteria.



| Features

- Customize to meet your QA/QC functionality needs
- Automate QA/QC checks
- Perform pre-selected action to attempt to remedy the problem - with no operator investigation
- Perform auto dilution as QC action on failure when used with the ISIS-DS
- Automatically generate custom QC reports that eliminate manual reporting procedures

ICP Expert Software

Powerful Agilent ICP Expert Software for the 5800/5900 ICP-OES and 5110/5100 ICP-OES systems features a familiar worksheet interface, easy method development, and preset methods to simplify your analysis and save you time. Smart features make recommendations and solve problems before they happen, reducing the number of samples you have to remeasure and giving you more confidence in your results.

Be assured of your analysis and compliance for your electronic records under the 21 CFR 11 regulations with the optional SCM and SDA software applications designed to support your lab requirement with ease.



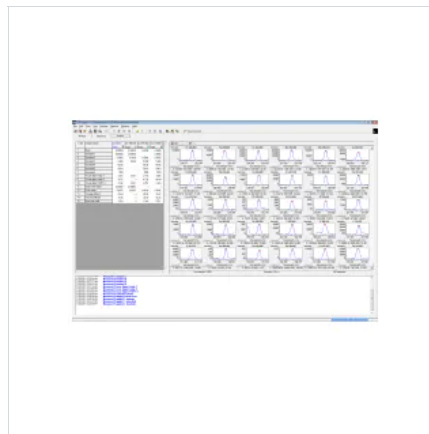
Reduce Downtime with a Smarter ICP-OES

Features

- Learn more about your samples using Agilent's unique IntelliQuant feature capturing data from the entire wavelength range. IntelliQuant identifies spectral interferences and provides recommendations to ensure you get the right answers every time.
 - Track your instrument health the smart way with ICP Expert, which reduces unplanned downtime and maintenance costs with sensor feedback and utilization-based counters that inform the user when maintenance is needed
 - Smart algorithms help take the guesswork out of method development and automate troubleshooting, including Fitted Background Correction (FBC), Fast Automated Curve-fitting Technique (FACT), Inter Element Correction (IEC), IntelliQuant, and Intelligent Rinse
 - Screen your samples within seconds with IntelliQuant Screening, ideal for method development assistance for unknown samples that can be transferred easily into a quantitative method, and trend analysis for batch samples measured routinely
 - Prevent wasted time and the cost of troubleshooting with Neb Alert, which continuously monitors the nebulizer, alerting the user when a suspected blockage or leakage occurs
 - Simple, flexible reporting with the OpenLab Intelligent Reporting enables users to configure reports to include only the data required.
 - Comprehensive and interactive Help and Learning Centre with contextual search functionality, assists users when facing the day-to-day challenges of instrument operation, with step by step instructions, tips and videos for maintenance and hardware setup.
 - Highlight unexpected results using Outlier Conditional Formatting (OFC). This feature allows users to quickly and easily apply one or more user-definable thresholds to their results flagging those that exceed a nominated range or don't pass a test.
 - Control your instrument remotely and receive real-time data and instrument updates with the Automation Software Pack. This programming toolkit (SDK) enables third party client software to control the ICP-OES instrument for added flexibility. (optional)
 - Built-in technical controls ensure the security of your data, control access, and facilitate compliance as defined by US FDA 21 CFR Part 11, EU Annex 11 and similar national electronic record regulations.
 - Control the Agilent Recirculating Chiller remotely through the software, with live status updates and helpful notifications when troubleshooting is required
-

ICP Expert II Software

Agilent ICP Expert II Software for the 710 Series and 720 Series spectrometers features an array of flexible performance and productivity enhancements that add more power to your ICP-OES analyses.



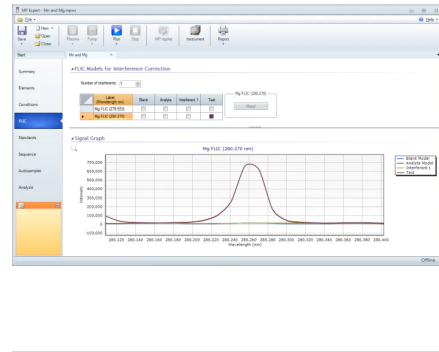
| Features

- Easy-to-use worksheet-based software contains wizards and comprehensive multimedia tools to guide you through operation
 - Fitted Background Correction (FBC) simplifies method development, eliminating the need to select correction points and ensuring better correction and fast analysis startup
 - Fast Automated Curve-fitting Technique (FACT) resolves complex spectral interferences, ensuring greater accuracy in difficult matrices. FACT modeling can be conducted post-analysis.
 - AutoMax eliminates manual optimization and provides fast automated method development
 - Smart Rinse speeds up sample washout, reducing carryover and increasing productivity
 - Spectroscopy Configuration Manager software assists in achieving compliance with the US FDA 21 CFR part 11 rule (optional).
 - MultiCal monitors results at two or more wavelengths for each element – giving you confidence in the accuracy of your results and extending your measurement range.
 - Time resolved signal mode enables you to couple the Agilent 720/725 to a HPLC or Laser Ablation for fast, multi-element speciation and qualitative applications.
 - Measure the full Echelle spectrum in less than 1 second to quickly identify elements in unknown samples.
 - Collect the spectral data of all elements in your samples without increasing analysis times for retrospective, semi-quantitative capability
-

MP Expert Software

Agilent MP Expert software is supplied with all MP-AES instruments and is your gateway to complete control of your analysis. This software includes proprietary features, such as FLIC background correction, to ensure you are always able to get the right result.

With intuitive workflows and assistance at every step from method setup to results processing, you will always be in the driver's seat and have total confidence in your results.



Features

- Wavelength and optimum parameters are preset and automatically recalled as you select the elements you need
- A comprehensive spectral library highlights potential interferences as you select each wavelength
- Spectral interferences are easily corrected using the Inter Element Correction (IEC) or Fast Linear Interference Correction (FLIC) techniques
- Accessory controls, such as those for the AVS 4 switching valve and the IsoMist temperature-controlled spray chamber, are included in the software for simplified setup
- Quality control standards can be easily included to verify and confirm results during analysis
- Results are clearly displayed on screen, with large format number results for the current sample enabling easy tracking, even across a busy laboratory
- A diagnostics dashboard gives real-time feedback on instrument status to ensure maximum instrument uptime
- Easily transfer results to a LIMS or other application using the flexible data exporting options
- MP Expert software is available in nine languages, so anybody can be confident running the system

По вопросам продаж и поддержки обращайтесь:

Алматы (7273)495-231	Казань (843)206-01-48	Новокузнецк (3843)20-46-81	Смоленск (4812)29-41-54
Архангельск (8182)63-90-72	Калининград (4012)72-03-81	Новосибирск (383)227-86-73	Сочи (862)225-72-31
Астрахань (8512)99-46-04	Калуга (4842)92-23-67	Омск (3812)21-46-40	Ставрополь (8652)20-65-13
Барнаул (3852)73-04-60	Кемерово (3842)65-04-62	Орел (4862)44-53-42	Сургут (3462)77-98-35
Белгород (4722)40-23-64	Киров (8332)68-02-04	Оренбург (3532)37-68-04	Тверь (4822)63-31-35
Брянск (4832)59-03-52	Краснодар (861)203-40-90	Пенза (8412)22-31-16	Томск (3822)98-41-53
Владивосток (423)249-28-31	Красноярск (391)204-63-61	Пермь (342)205-81-47	Тула (4872)74-02-29
Волгоград (844)278-03-48	Курск (4712)77-13-04	Ростов-на-Дону (863)308-18-15	Тюмень (3452)66-21-18
Вологда (8172)26-41-59	Липецк (4742)52-20-81	Рязань (4912)46-61-64	Ульяновск (8422)24-23-59
Воронеж (473)204-51-73	Магнитогорск (3519)55-03-13	Самара (846)206-03-16	Уфа (347)229-48-12
Екатеринбург (343)384-55-89	Москва (495)268-04-70	Санкт-Петербург (812)309-46-40	Хабаровск (4212)92-98-04
Иваново (4932)77-34-06	Мурманск (8152)59-64-93	Саратов (845)249-38-78	Челябинск (351)202-03-61
Ижевск (3412)26-03-58	Набережные Челны (8552)20-53-41	Севастополь (8692)22-31-93	Череповец (8202)49-02-64
Иркутск (395)279-98-46	Нижний Новгород (831)429-08-12	Симферополь (3652)67-13-56	Ярославль (4852)69-52-93
Россия (495)268-04-70	Киргизия (996)312-96-26-47	Казахстан (7172)727-132	

afr@nt-rt.ru || <https://agilent.nt-rt.ru/>