

# Технические характеристики

## По вопросам продаж и поддержки обращайтесь:

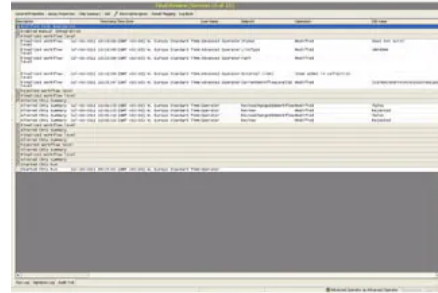
Алматы (7273)495-231	Казань (843)206-01-48	Новокузнецк (3843)20-46-81	Смоленск (4812)29-41-54
Архангельск (8182)63-90-72	Калининград (4012)72-03-81	Новосибирск (383)227-86-73	Сочи (862)225-72-31
Астрахань (8512)99-46-04	Калуга (4842)92-23-67	Омск (3812)21-46-40	Ставрополь (8652)20-65-13
Барнаул (3852)73-04-60	Кемерово (3842)65-04-62	Орел (4862)44-53-42	Сургут (3462)77-98-35
Белгород (4722)40-23-64	Киров (8332)68-02-04	Оренбург (3532)37-68-04	Тверь (4822)63-31-35
Брянск (4832)59-03-52	Краснодар (861)203-40-90	Пенза (8412)22-31-16	Томск (3822)98-41-53
Владивосток (423)249-28-31	Красноярск (391)204-63-61	Пермь (342)205-81-47	Тула (4872)74-02-29
Волгоград (844)278-03-48	Курск (4712)77-13-04	Ростов-на-Дону (863)308-18-15	Тюмень (3452)66-21-18
Вологда (8172)26-41-59	Липецк (4742)52-20-81	Рязань (4912)46-61-64	Ульяновск (8422)24-23-59
Воронеж (473)204-51-73	Магнитогорск (3519)55-03-13	Самара (846)206-03-16	Уфа (347)229-48-12
Екатеринбург (343)384-55-89	Москва (495)268-04-70	Санкт-Петербург (812)309-46-40	Хабаровск (4212)92-98-04
Иваново (4932)77-34-06	Мурманск (8152)59-64-93	Саратов (845)249-38-78	Челябинск (351)202-03-61
Ижевск (3412)26-03-58	Набережные Челны (8552)20-53-41	Севастополь (8692)22-31-93	Череповец (8202)49-02-64
Иркутск (395)279-98-46	Нижний Новгород (831)429-08-12	Симферополь (3652)67-13-56	Ярославль (4852)69-52-93
Россия (495)268-04-70	Киргизия (996)312-96-26-47	Казахстан (7172)727-132	


# 2100 Expert Security Pack

Elevate data analysis from GMP/GLP to 21 CFR Part 11 compliance with the 2100 Expert Security Pack as an add-on to the Bioanalyzer Expert Software. Additional user management, pre-validated methods, and access control help to comply with data security, integrity and traceability requirements mandated by FDA 21 CFR Part 11.

Easily create audit trails to track and prove user actions, and manage workflows for enhanced productivity.

Note: It is mandatory to purchase the 2100 Expert SW Laptop Bundle for operation.



Part Number	Description
<a href="#">G2949CA</a>	2100 Security Pack License
	2100 Security Pack License. For CFR 21 Part 11 compliance. Includes compliance software upgrade and licenses.

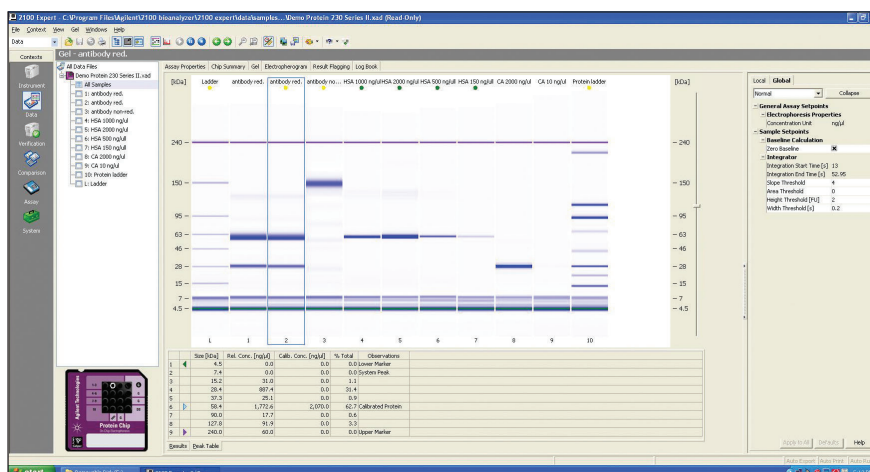
## Features

- Retain complete data history and protect files from modification and deletion
- Ensuring full data integrity.
- Improve data security with access control that enables users to acquire and modify data files.
- Audit trail logging user interactions, such as time, details of user interactions and security violations, ensure full traceability.
- Pre-defined workflow management provides users with pre-set parameters and peer review cycles with electronic signatures.
- Pre-validated methods enable 21 CF Part 11 compliance in a time and cost effective way.
- Compliance Services (IQ and OQ) can be purchased and are delivered by a certified customer engineer who will test and verify the functionality of the system.

## Specifications

Compliance Services	21 CFR Part 11
---------------------	----------------

## Agilent 2100 Expert Software B.02.11 (SR1)



### Tested Configuration

#### PC Hardware

Processor: CPU Intel i5-8365U  
(1.6 GHz)

Memory: 8 GB

Ports: 1 Serial port (RS 232)  
2 USB 3.1 ports

Display: Resolution of  
1920 x 1080 pixels

Hard disk: 500 GB

#### PC Operating System

Windows 10 Professional

#### Notes:

- Not compatible with Bioanalyzer model G2938A.
- Laptop configurations are supported only with one instrument connected (or two instruments, if a serial port connection is available).
- Compliance services are available for the following models of Bioanalyzer instruments: G2938B, G2938C, G2939A, and G2939B.

### Powerful Software for the Analysis of RNA, DNA and Proteins

The Agilent 2100 Expert Software is the single software solution created for the Agilent 2100 Bioanalyzer system. The latest revision B.02.11 (SR1) supports all electrophoretic assays for the 2100 Bioanalyzer system and offers improved manual integration and enhanced Security Pack functionality.

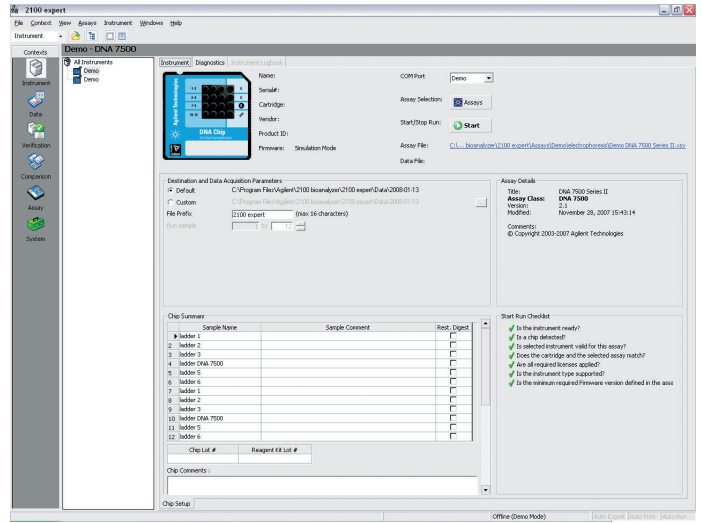
#### Key Features

- Powerful data evaluation tools: Single platform for all assays, automatic and manual integration, smear analysis and many assay specific tools
- Instrument control for all Bioanalyzer RNA, DNA and protein assays
- Unique RNA Integrity Number (RIN) algorithm: The industry standard for unbiased total RNA integrity assessment, including the specific analysis of RNA from plants
- Easy to share: Free data review software enables offline evaluation and sharing
- Efficient: Integrated diagnostic and troubleshooting minimize system downtime
- Ready for compliance: System validation services (IQ and OQ) and the optional Security Pack support 21 CFR Part 11 compliance
- Color coded Result Flagging Tool: An easy-to-use, rule defined system for automated result display

# Features of 2100 Expert Software B.02.11 (SR1)

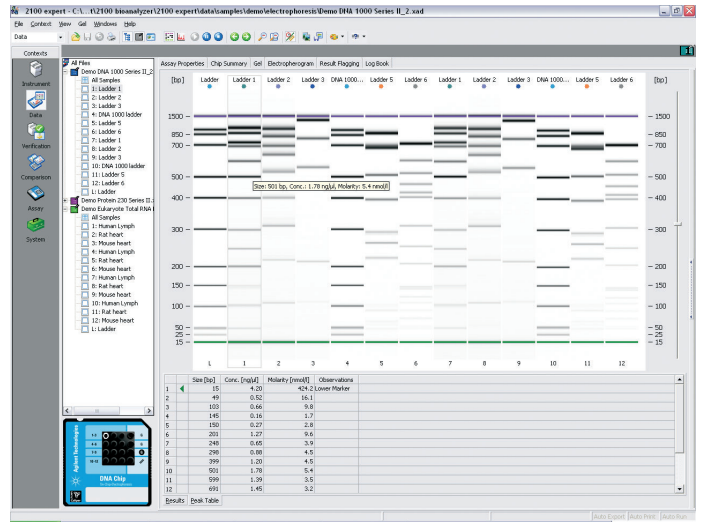
## Setup and start

Setup of samples, choice of assay and start of run is conveniently available from an intuitive user interface giving access to Agilent 2100 Bioanalyzer instruments.



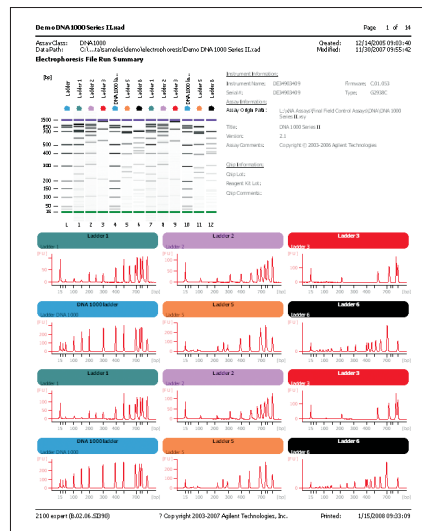
## Analyze and compare

Various graphical views, such as the gel-like format shown here, are supported by tables of additional information and facilitate easy analysis of results.



## Print reports

Reports can be configured easily by users to meet their individual needs. Color-coded flagging of results allows users to see at a glance whether specific results are within limits.



# 2200 TapeStation Software

Data analysis with the 2200 TapeStation Software is simple and intuitive, with streamlined data acquisition and reporting. Sample QC is made quick and easy, and sample concentration and sizing are automatically provided. The system also enables sample integrity of DNA and RNA to be determined reproducibly by the DIN and RIN<sup>®</sup>.

The 2200 TapeStation Analysis software features region analysis for fast sizing and quantification of libraries and compressed reporting. Intuitive features such as zooming and scaling, and simple sample comparisons add to the system's versatility. Export the finalized data in multiple formats for ease-of-use.

Please note that the guaranteed support for Agilent 2200 TapeStation systems ends on December 31, 2021. For more information, please contact your local Agilent representative.



## Features

- Ensure sample integrity with the DNA Integrity Number (DIN) and RIN-equivalent (RIN<sup>®</sup>).
- Intuitive data analysis capabilities including scaling and zooming features and the ability to compare samples for a full 96-well run.
- Compressed reporting functions save white space.
- Region analysis for the fast sizing and quantification of library preparations.
- Multiple exportable data formats are allowed for straightforward integration into presentations or Laboratory Information Management Systems (LIMS).

# Agilent ProSize Data Analysis Software For the Agilent Fragment Analyzer, Femto Pulse and ZAG DNA Analyzer Parallel Electrophoresis Systems



## Powerful and intuitive nucleic acid data analysis

The Agilent ProSize data analysis software is designed to analyze raw data acquired from the Fragment Analyzer, Femto Pulse and ZAG DNA Analyzer parallel capillary electrophoresis systems offered by Agilent. These instruments deliver automated fragment separation solutions for a variety of applications including nucleic acid raw materials, second and third generation next-generation sequencing (NGS) library preparation, *in vitro* transcribed (IVT) RNA, microRNA, fragment analysis, and Bacterial Artificial Chromosome (BAC).

### Software Benefits:

- Data can be processed and saved for further analysis
- Users can share raw data and processed files for collaborations
- Results are presented in easy to interpret reports

### Features:

- Software is compatible with the Fragment Analyzer, Femto Pulse and the ZAG DNA Analyzer systems
- Analyze the size and concentration of individual sample fragments and smears for both small and large ranges
- Directly compare sample size, peak height, and separation profile(s) by easily overlaying samples from the same or different runs
- Obtain objective sample quality metrics for genomic DNA (gDNA) with the customizable thresholds of the genomic quality number (GQN) providing greater flexibility for gDNA assessment, total RNA with the RNA quality number (RQN), and FFPE RNA with the DV<sub>200</sub>
- Automatically score samples for the presence or absence of specific DNA fragment size(s) with the multifunctional flagging feature
- Export data and images in a variety of formats such as CSV file or PDF, with the option to select all the data or only a subset of data
- Ability to set unit labels in either ng/μL and nmole/L or pg/μL and pmole/L
- Laboratory Information Management System (LIMS)-enabled
- Administrative user and login privileges enable enhanced security features
- Event Error Logs are generated automatically when enhanced security features are enabled

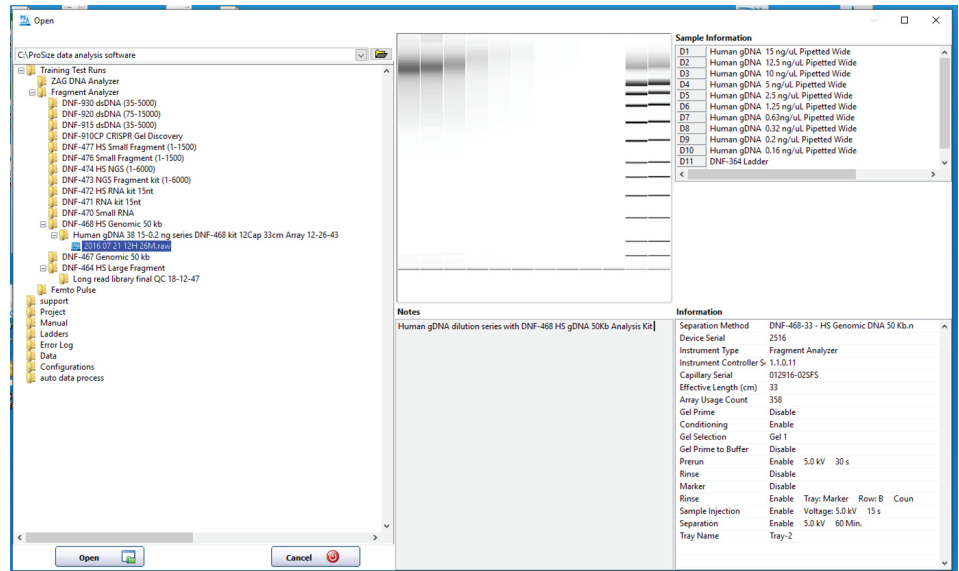
### PC Specifications:

Display Resolution.....	1280 x 1024 pixels - Recommended or 1280 x 800 pixels - Minimum resolution
Hard Disk Space Requirements.....	500 GB
Memory.....	4 GB
Operating System.....	Windows 10, 64 bit. English (US) language settings
Ports.....	Two USB ports
Processor.....	Intel i5 or above
Software Type.....	ProSize data analysis software
Data Export Format.....	CSV and PDF
Operation system regions setting.....	English (US) in default configurations

## ProSize data analysis software:

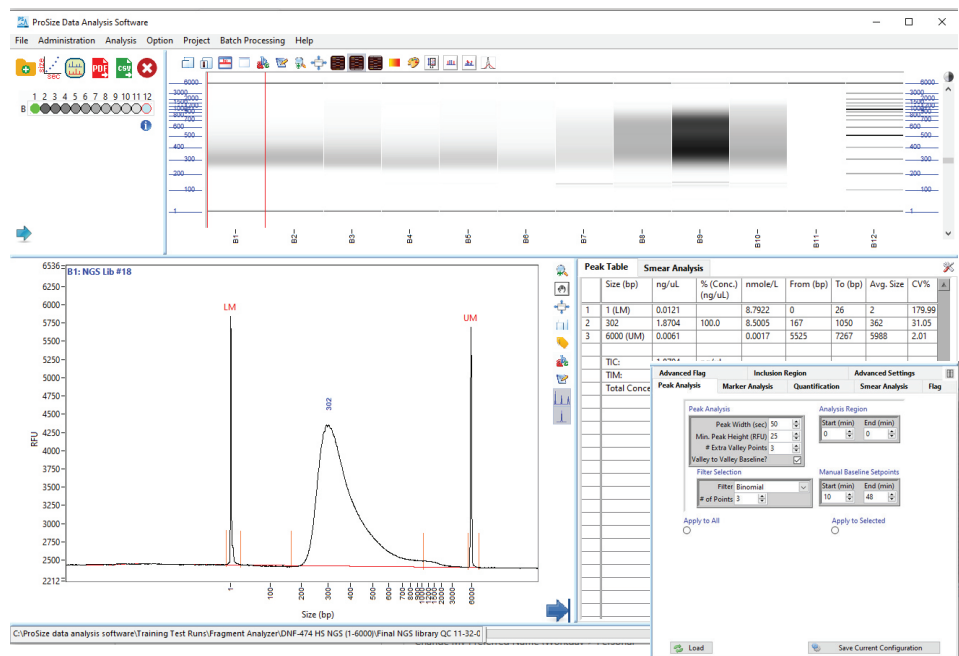
### 1. Start the analysis

ProSize data analysis software allows users to select the file for analysis and navigate through the results with data preview, sample information, separation method and experimental notes available on the main screen.



### 2. Analyze and compare

Data can be analyzed in the gel or electropherogram view. Concentration and sizing information is displayed in the peak and sample table. In the Advanced Settings tab, the user can select the desired Analysis Mode for specific sample types such as Total RNA from prokaryotes, eucaryotes or plants. Samples can also be overlaid for quick profile comparison. The software offers intuitive user interface which allows a pleasant sample analysis experience.

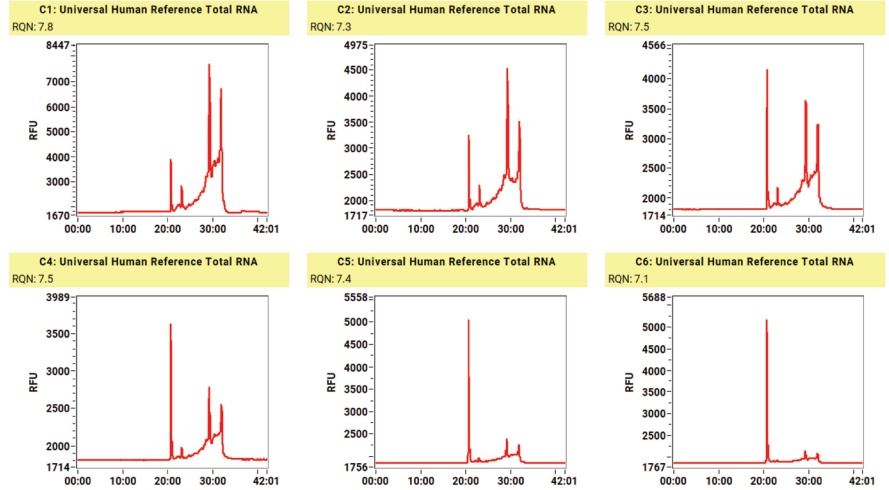




### 3. Generate PDF report

Sample reports are easily generated. Users can take advantage of the Flag Analysis feature and customizable reports for clear overview of results based on their requirements.

**Filename and data path:** C:\ProSize data analysis software\Training Test Runs\Fragment Analyzer\DNF-472 HS RNA kit 15nt\sample dilution series 20-07-57\2018 01 17 20H 07M.raw



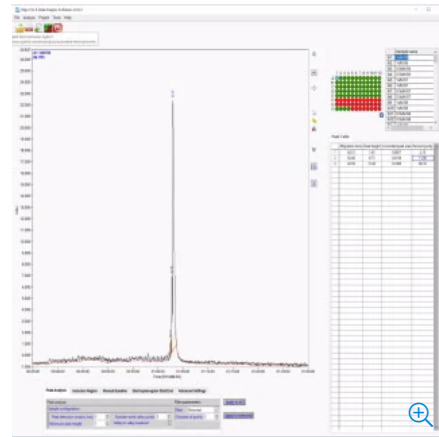
---

---

---

# Oligo Pro II Software

The Oligo Pro II analysis software provides quick and easy visual analysis of ssDNA and ssRNA oligonucleotide purity. The software identifies the major peak as the peak of interest and calculates the percent purity in relation to all integrated peaks. Features of the software include: an electropherogram trace with percent purity, a plate layout with color coded pass/fail purity criteria, and a table that shows peak number and percentage of total peak area.



## Features

- Purity Analysis - calculates percent purity of ssDNA and ssRNA oligonucleotides
- Export Data - export pdf reports and .csv files for downstream analysis
- Visual display of separation - displays an interactive electropherogram for sample analysis

## Specifications

Data Export Format	CSV	PDF
Display Resolution	1280 x 1024 or 1280 x 800 pixels	
Hard Disk Space Requirements	500 GB	
Memory	4 GB	
Operating System	Windows 10, 64 bit. English (US) language settings	
Ports	USB	
Processor	Intel Core 2 or faster	
Software Type	Oligo Pro Data Analysis Software	

# Agilent TapeStation Software 4.1.1

## For the Agilent TapeStation Systems



### Simple and intuitive data analysis

The Agilent TapeStation systems are automated electrophoresis solutions for quality control (QC) of DNA and RNA samples. The TapeStation software is the single software solution for the Agilent TapeStation systems and offers streamlined data acquisition, data evaluation and reporting of data analysis results.

Software highlights:

- Automated analysis of sample concentration and size
- Reproducible and objective sample integrity analysis by the DNA integrity number (DIN) for genomic DNA and by the RNA integrity number equivalent (RIN<sup>®</sup>) for total RNA
- Analysis of cell-free DNA (cfDNA) sample quality by detection of high molecular weight DNA contamination
- Support of installation qualification (IQ) and operational qualification (OQ) compliance services

## Features

- Support of the 4150 and 4200 TapeStation instruments
- Instrument-specific Controller software that allows setup of runs within seconds
- Support of all DNA and RNA ScreenTape assays including the new Cell-free DNA assay
- Intuitive Analysis software which provides:
  - Results in gel and electropherogram view
  - Peak and region analysis options for exact sizing and quantitation depending on sample types
  - Easy and fast sample comparison
  - Objective sample integrity analysis with the DNA Integrity Number (DIN) for genomic DNA and RNA Integrity Number equivalent (RIN<sup>e</sup>) for total RNA samples
  - Qualification of cfDNA by detection of high molecular weight DNA contamination and automated calculation of %cfDNA value
  - Generation of customizable reports
  - Multiple exportable data formats which enable straightforward integration into presentations or Laboratory Information Management Systems (LIMS)
- Integrated hardware diagnostic and functional verification tools to minimize system downtime
- Agilent Information Center provides all product information and maintenance procedures, including animations, troubleshooting and how-to videos
- Ready for compliance – IQ and OQ system validation services available

## PC hardware (tested specifications)

Processors:	2.4 GHz or higher
RAM:	Physical: 8 GB, virtual: 1 GB
Ports:	Two ports, USB-2 or higher
Display:	Minimum resolution of 1024 × 768 px
Hard disk:	80 GB recommended, > 20 GB of free space

## PC operating system

Operating system:	Windows 10 Pro 64 bit 1909 or later
Operating system language:	English (US)
Operating system region settings:	English (US) in default configuration
Microsoft .NET:	4.6.2 or higher
Adobe Acrobat DC:	Version 20.013.20074 (English US) or higher required for reporting
Power plan settings:	High performance

### Notes:

*2200 TapeStation instruments are not supported by TapeStation software 4.1.1.*

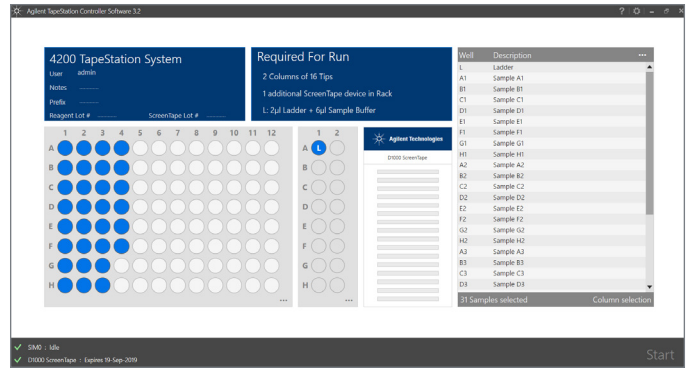
*TapeStation software 4.1.1 supports one instrument per PC.*

*Optional Agilent Laptop PC with preloaded TapeStation software available (p/n G2999AA).*

# TapeStation software workflow

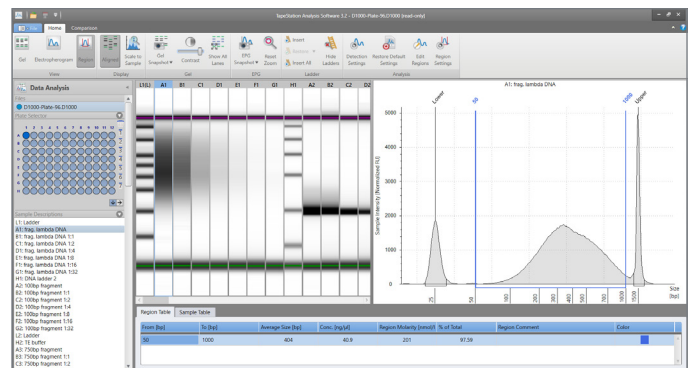
## 1. Setup and start

The TapeStation Controller software allows to set up a run within seconds. The ScreenTape assay is automatically detected when the ScreenTape device is inserted into the TapeStation instrument. Details about the required consumables are displayed. Sample descriptions can be imported.



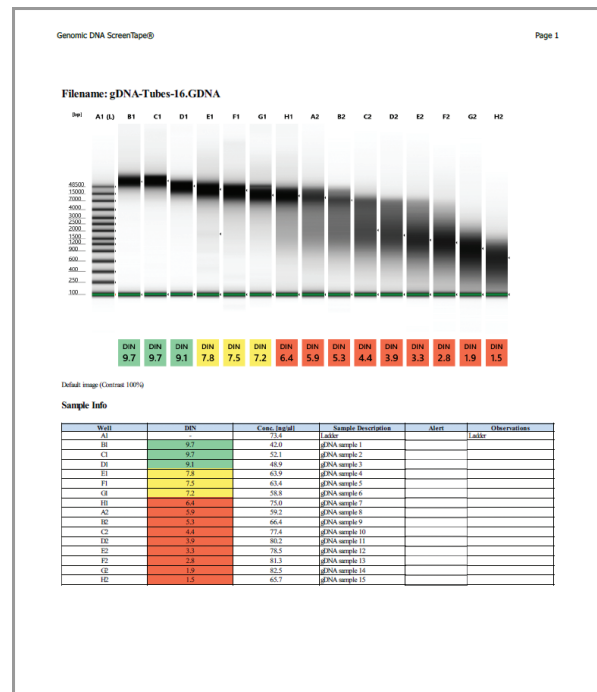
## 2. Analyze and compare

Data can be analyzed in the gel and electropherogram view. Quantitative and sizing information is shown in the peak, sample and region tables. In comparison mode, sample electropherograms can be directly overlaid and compared to each other.



## 3. Print reports

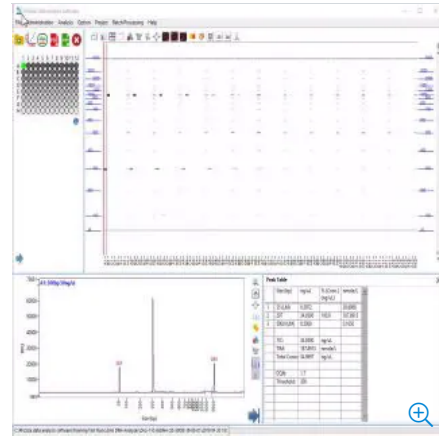
Reports can be customized easily. Color-coded flagging of results allows a clear overview on whether specific results are within limits.



# ZAG DNA Analyzer Software

The ZAG DNA Controller software is optimized for automated high-throughput DNA screening and fragment analysis. This easy-to-use DNA analysis software uses batch processing to automatically process samples and flag wells that meet your defined criteria, making it simpler than ever to obtain the information that matters most to you.

The ProSize data analysis software provides digital data for quick and easy visual analysis of DNA size. It is ideal for DNA analyses such as genotyping, microsatellites/SSR, and restriction digests. After the electrophoretic separation the software generates reports in multiple formats.



## Features

- Software can be used with the ZAG DNA Analyzer system
- Compare sizing, peak height, and separation profile from the same run or multiple runs with direct visual data overlay
- Automatically score DNA fragment size with the multifunctional flagging feature
- Easily export data and images from either the entire run or only samples of interest as a CSV file, a PDF, or a project report for further analyses
- Adjust electrokinetic injection conditions (both voltage and time)
- Laboratory Information Management System (LIMS)-enabled
- Set up batch processing for hundreds of samples simultaneously pre- or post-run
- Enhanced data security features with login privileges and administrative user permissions
- Get e-mail notifications for run completion and errors
- Allow multiple users to use and evaluate samples across laboratories with the freely available software

<b>Data Export Format</b>	CSV	PDF
<b>Display Resolution</b>	1280 x 1024 or 1280 x 800 pixels	
<b>Hard Disk Space Requirements</b>	500 GB	
<b>Memory</b>	4 GB	
<b>Operating System</b>	Windows 10, 64 bit. English (US) language settings	
<b>Ports</b>	USB	
<b>Processor</b>	Intel i5 or above	
<b>Software Type</b>	ProSize Data Analysis Software	

**По вопросам продаж и поддержки обращайтесь:**

Алматы (7273)495-231	Казань (843)206-01-48	Новокузнецк (3843)20-46-81	Смоленск (4812)29-41-54
Архангельск (8182)63-90-72	Калининград (4012)72-03-81	Новосибирск (383)227-86-73	Сочи (862)225-72-31
Астрахань (8512)99-46-04	Калуга (4842)92-23-67	Омск (3812)21-46-40	Ставрополь (8652)20-65-13
Барнаул (3852)73-04-60	Кемерово (3842)65-04-62	Орел (4862)44-53-42	Сургут (3462)77-98-35
Белгород (4722)40-23-64	Киров (8332)68-02-04	Оренбург (3532)37-68-04	Тверь (4822)63-31-35
Брянск (4832)59-03-52	Краснодар (861)203-40-90	Пенза (8412)22-31-16	Томск (3822)98-41-53
Владивосток (423)249-28-31	Красноярск (391)204-63-61	Пермь (342)205-81-47	Тула (4872)74-02-29
Волгоград (844)278-03-48	Курск (4712)77-13-04	Ростов-на-Дону (863)308-18-15	Тюмень (3452)66-21-18
Вологда (8172)26-41-59	Липецк (4742)52-20-81	Рязань (4912)46-61-64	Ульяновск (8422)24-23-59
Воронеж (473)204-51-73	Магнитогорск (3519)55-03-13	Самара (846)206-03-16	Уфа (347)229-48-12
Екатеринбург (343)384-55-89	Москва (495)268-04-70	Санкт-Петербург (812)309-46-40	Хабаровск (4212)92-98-04
Иваново (4932)77-34-06	Мурманск (8152)59-64-93	Саратов (845)249-38-78	Челябинск (351)202-03-61
Ижевск (3412)26-03-58	Набережные Челны (8552)20-53-41	Севастополь (8692)22-31-93	Череповец (8202)49-02-64
Иркутск (395)279-98-46	Нижний Новгород (831)429-08-12	Симферополь (3652)67-13-56	Ярославль (4852)69-52-93
Россия (495)268-04-70	Киргизия (996)312-96-26-47	Казахстан (7172)727-132	

[afr@nt-rt.ru](mailto:afr@nt-rt.ru) || <https://agilent.nt-rt.ru/>