

Технические характеристики

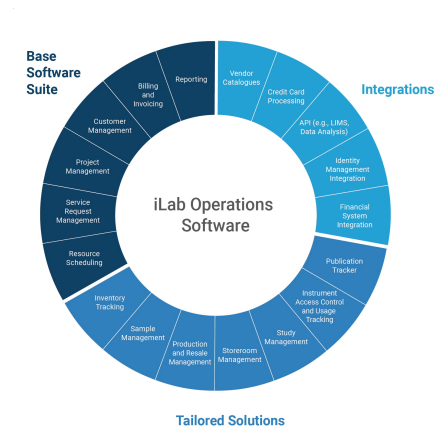
По вопросам продаж и поддержки обращайтесь:

Алматы (7273)495-231	Казань (843)206-01-48	Новокузнецк (3843)20-46-81	Смоленск (4812)29-41-54
Архангельск (8182)63-90-72	Калининград (4012)72-03-81	Новосибирск (383)227-86-73	Сочи (862)225-72-31
Астрахань (8512)99-46-04	Калуга (4842)92-23-67	Омск (3812)21-46-40	Ставрополь (8652)20-65-13
Барнаул (3852)73-04-60	Кемерово (3842)65-04-62	Орел (4862)44-53-42	Сургут (3462)77-98-35
Белгород (4722)40-23-64	Киров (8332)68-02-04	Оренбург (3532)37-68-04	Тверь (4822)63-31-35
Брянск (4832)59-03-52	Краснодар (861)203-40-90	Пенза (8412)22-31-16	Томск (3822)98-41-53
Владивосток (423)249-28-31	Красноярск (391)204-63-61	Пермь (342)205-81-47	Тула (4872)74-02-29
Волгоград (844)278-03-48	Курск (4712)77-13-04	Ростов-на-Дону (863)308-18-15	Тюмень (3452)66-21-18
Вологда (8172)26-41-59	Липецк (4742)52-20-81	Рязань (4912)46-61-64	Ульяновск (8422)24-23-59
Воронеж (473)204-51-73	Магнитогорск (3519)55-03-13	Самара (846)206-03-16	Уфа (347)229-48-12
Екатеринбург (343)384-55-89	Москва (495)268-04-70	Санкт-Петербург (812)309-46-40	Хабаровск (4212)92-98-04
Иваново (4932)77-34-06	Мурманск (8152)59-64-93	Саратов (845)249-38-78	Челябинск (351)202-03-61
Ижевск (3412)26-03-58	Набережные Челны (8552)20-53-41	Севастополь (8692)22-31-93	Череповец (8202)49-02-64
Иркутск (395)279-98-46	Нижний Новгород (831)429-08-12	Симферополь (3652)67-13-56	Ярославль (4852)69-52-93
Россия (495)268-04-70	Киргизия (996)312-96-26-47	Казахстан (7172)727-132	

Core Facilities Management

CrossLab iLab core facility management is a web-based enterprise software solution composed of a base software suite and add-on modules and integrations. The software facilitates service request, customer, and project management, as well as billing and invoicing, among other functions.

iLab core facility management software helps you save time and money for core personnel, institutional administrators, and researchers. iLab operations software is designed to meet the needs of varying types of shared resource facilities, benefitting the individual core and enabling an institution to fully profit from investment in core operations.

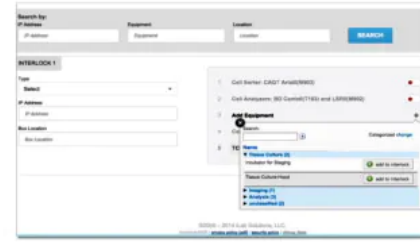


Features

- Manage requests easily with iLab's streamlined and straightforward workflow with request management
- Easy to use and intuitive interface for managing reservations with resource scheduling
- View dynamic reports within the system or download the underlying data for business intelligence analysis from the usage, request, and billing data stored in the system
- Simple and intuitive billing platform ensures accurate accounting and timely compensation with the billing and invoicing module
- Advanced customer management tool uses association and filtering options for customized searches and allows the core to easily manage customer details in one place with people Ssearch
- Track inventory and sample location with barcoding capabilities and the inventory management system
- Integration of the software with institutional financial systems, identity management systems, or specialized software systems, implemented by a dedicated implementation team
- Easily search, filter, and save publications, namely those citing your core, with publication tracker

Instrument Access Control & Usage Tracking

The iLab instrument access management module allows facilities, such as nanofabrication and cleanrooms, to manage access of shared equipment through use of a microcontroller. This microcontroller acts as a bridge between iLab and the internal networks on campus, enabling facilities to control access to instruments that are both on an external network or connected locally.



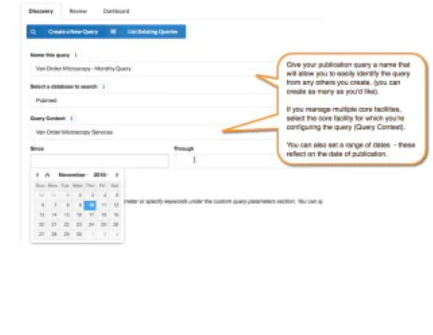
Instrument Access Control

Features

- Facilities can define when and by whom instruments can be used via booking rules (time of day), user type (internal or external, trained or untrained), or reservation type (prereservation requirement or if walk-ups are acceptable).
- Facilities can control access to instruments that are on an external network or connected locally.
- Real-time equipment usage tracking can be compared against scheduled time through a kiosk-style computer interface. Reservations will automatically reflect the scheduled and actual usage, allowing for a more efficient confirmation and billing process.

Publication Tracking

iLab publication tracker helps cores easily search for, filter, and save publications associated with the core. By combining publication data with other reporting data available in iLab, core facility administrators can get a quick view of the valuable services they provide.



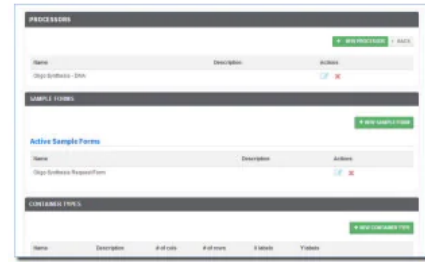
Publication Tracker

Features

- Save managers time by making it easier to find publications to which core facilities may have contributed
- Increase data quality and save managers time by distributing the process of confirming publication contributions directly to researchers
- Save researchers time by providing simple confirmation interfaces instead of emailing Excel spreadsheets back and forth
- Improve facility insights by providing rich and detailed data exports that can be customized to meet a variety of different reporting needs

Sample Processing Management

The iLab sample processing tool allows cores to flexibly configure and combine a variety of container types, customer request forms, services, charges, and instrument input files, and specifically tailor them to a particular application or instrument.



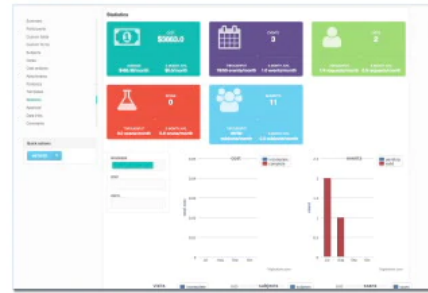
Sample Workflow

Features

- Tracks the workflow from request submission and sample processing to billing
- Provides the ability to combine samples from multiple requests into plates, such as a 96-well plate, flow cells, or other specialized sample processor configurations
- Allows for the creation of customized processor types, request forms, and associated services to support many technologies, instrumentation, and workflows
- Generates customizable sample sheets for upload into instrument software
- Automatically ties performed services to billing

Automated Studies Management

iLab study management software helps core facilities manage large scientific studies. This module ties individual tasks of a study to a larger, overarching project, which increases experimentation consistency and allows for collaboration of multiple researchers on one study.



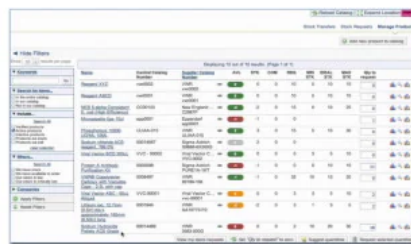
Study Management

Features

- Study management tool dashboard: include start, stop, and approval dates, status, and more
- Communication tracking: ability to track communications with collaborators and select whether or not you would like to be informed of specific studies
- Research collaboration: ability to run long-term studies with multiple researchers and multiple requests
- Cost analysis: optionally include a cost analysis for the study initiator(s) and coordinator(s)
- Subjects tracking: optionally and upon approval of the institution, include questions about whether or not human subjects will be involved in the study and formally track subjects in iLab, as appropriate
- Protocols: ability to associate protocols with intended long-term projects
- Study statistics: ability to capture important information about the work conducted
- Custom fields, forms, attachments, and links: allow cores to capture consistent and important information about the work to be conducted in a variety of formats, and allow the option of manual result entry
- Bill for services: track and bill per activity completed or service rendered

Storeroom Management

iLab storeroom management helps facilities such as chemistry stockrooms, supply closets, and storerooms manage and sell scientific products produced internally or procured from outside vendors. Its functionality flexibly supports the myriad of workflows that occur during the lifecycle of an order, including order placement, product listing, stock level and reorder management, and distribution tracking.



Storeroom Management

Features

- Manage inventory levels in real-time through sales, receiving, transfers, and adjustments
- Receive items into on-hand inventory (from a vendor or from core manufacturing)
- Sell products using order entry/POS (point of sale) method
- Allow customers to browse and order through an online core catalog
- Allow online and in-person product ordering, pickup, and delivery
- Allow for the use of internal fund cards as 'debit' cards for customers
- Generate vendor purchase orders
- Perform full or partial physical inventory counts
- Create revenue and usage reports
- Track critical info (i.e., dates and titer)
- Follow detailed tracking of hazardous chemicals

По вопросам продаж и поддержки обращайтесь:

Алматы (7273)495-231
Архангельск (8182)63-90-72
Астрахань (8512)99-46-04
Барнаул (3852)73-04-60
Белгород (4722)40-23-64
Брянск (4832)59-03-52
Владивосток (423)249-28-31
Волгоград (844)278-03-48
Вологда (8172)26-41-59
Воронеж (473)204-51-73
Екатеринбург (343)384-55-89
Иваново (4932)77-34-06
Ижевск (3412)26-03-58
Иркутск (395)279-98-46
Россия (495)268-04-70

Казань (843)206-01-48
Калининград (4012)72-03-81
Калуга (4842)92-23-67
Кемерово (3842)65-04-62
Киров (8332)68-02-04
Краснодар (861)203-40-90
Красноярск (391)204-63-61
Курск (4712)77-13-04
Липецк (4742)52-20-81
Магнитогорск (3519)55-03-13
Москва (495)268-04-70
Мурманск (8152)59-64-93
Набережные Челны (8552)20-53-41
Нижний Новгород (831)429-08-12
Киргизия (996)312-96-26-47

Новокузнецк (3843)20-46-81
Новосибирск (383)227-86-73
Омск (3812)21-46-40
Орел (4862)44-53-42
Оренбург (3532)37-68-04
Пенза (8412)22-31-16
Пермь (342)205-81-47
Ростов-на-Дону (863)308-18-15
Рязань (4912)46-61-64
Самара (846)206-03-16
Санкт-Петербург (812)309-46-40
Саратов (845)249-38-78
Севастополь (8692)22-31-93
Симферополь (3652)67-13-56
Казахстан (7172)727-132

Смоленск (4812)29-41-54
Сочи (862)225-72-31
Ставрополь (8652)20-65-13
Сургут (3462)77-98-35
Тверь (4822)63-31-35
Томск (3822)98-41-53
Тула (4872)74-02-29
Тюмень (3452)66-21-18
Ульяновск (8422)24-23-59
Уфа (347)229-48-12
Хабаровск (4212)92-98-04
Челябинск (351)202-03-61
Череповец (8202)49-02-64
Ярославль (4852)69-52-93