

Технические характеристики

По вопросам продаж и поддержки обращайтесь:

Алматы (7273)495-231
Архангельск (8182)63-90-72
Астрахань (8512)99-46-04
Барнаул (3852)73-04-60
Белгород (4722)40-23-64
Брянск (4832)59-03-52
Владивосток (423)249-28-31
Волгоград (844)278-03-48
Вологда (8172)26-41-59
Воронеж (473)204-51-73
Екатеринбург (343)384-55-89
Иваново (4932)77-34-06
Ижевск (3412)26-03-58
Иркутск (395)279-98-46
Россия (495)268-04-70

Казань (843)206-01-48
Калининград (4012)72-03-81
Калуга (4842)92-23-67
Кемерово (3842)65-04-62
Киров (8332)68-02-04
Краснодар (861)203-40-90
Красноярск (391)204-63-61
Курск (4712)77-13-04
Липецк (4742)52-20-81
Магнитогорск (3519)55-03-13
Москва (495)268-04-70
Мурманск (8152)59-64-93
Набережные Челны (8552)20-53-41
Нижний Новгород (831)429-08-12
Киргизия (996)312-96-26-47

Новокузнецк (3843)20-46-81
Новосибирск (383)227-86-73
Омск (3812)21-46-40
Орел (4862)44-53-42
Оренбург (3532)37-68-04
Пенза (8412)22-31-16
Пермь (342)205-81-47
Ростов-на-Дону (863)308-18-15
Рязань (4912)46-61-64
Самара (846)206-03-16
Санкт-Петербург (812)309-46-40
Саратов (845)249-38-78
Севастополь (8692)22-31-93
Симферополь (3652)67-13-56
Казахстан (7172)727-132

Смоленск (4812)29-41-54
Сочи (862)225-72-31
Ставрополь (8652)20-65-13
Сургут (3462)77-98-35
Тверь (4822)63-31-35
Томск (3822)98-41-53
Тула (4872)74-02-29
Тюмень (3452)66-21-18
Ульяновск (8422)24-23-59
Уфа (347)229-48-12
Хабаровск (4212)92-98-04
Челябинск (351)202-03-61
Череповец (8202)49-02-64
Ярославль (4852)69-52-93

MP-AES Supplies

Agilent 4100/4200/4210 MP-AES Supplies

Agilent has revolutionized atomic spectroscopy with the introduction of an instrument that doesn't just redefine a category—it creates a new one.

The next generation of MP-AES technology, the Agilent 4210 MP-AES provides the lowest cost of ownership, improved safety, and superior performance.

The 4210 MP-AES has high sensitivity, detection limits down to sub ppb levels, and is faster than conventional flame atomic absorption. Best of all, it runs on air instead of combustible gases.

The 4210 MP-AES is also easy to use with application-specific software applets and plug-and-play hardware to ensure you can set up quickly without method development or alignment, and with minimal training.

Agilent provides all of the supplies and accessories you need for the 4100/4200/4210 MP-AES.



4210 Microwave Plasma-Atomic
Emission Spectrometer

TIPS AND TOOLS

Skipping sample filtration can lead to significant downtime if large particles become trapped in the sample uptake tubing, nebulizer, or injector.

Agilent Captiva Premium Syringe Filters are available in a wide range of sizes, formats, and membranes. With the industry's highest flow rates and loading capacities, they make the filtration process faster than ever.

MP-AES Torches

Description	Comments	Part No.
Easy-fit torch for 4200/4210 MP-AES, with a blue base for easy identification	Suitable for the 4200/4210 MP-AES only	G8003-70000
Easy-fit inert torch for 4200/4210 MP-AES, for use with HF digests	Features an inert alumina injector and supplied with a PTFE ball joint coupler and inert torch clamp Recommended for use with the inert double pass spray chamber, p/n G8010-80034 (not supplied)	G8003-60018
Easy-fit torch for 4100 MP-AES	Suitable for the 4100 MP-AES only	G8000-70002
Torch cleaning stand for MP-AES torches	Provides a stable platform that allows the whole torch to be suspended in the cleaning solution	G8003-68003
Torch clamp		G8000-64140
Torch clamp for inert torch	Secures ball joint socket between inert spray chamber and inert torch for 4200/4210 MP-AES Not suitable for the standard torch	G8010-60227
Ball joint adaptor for Easy-fit inert torch used with 4200/4210 MP-AES	Connects the alumina injector of the inert torch to the ball joint connector of the inert spray chamber Not required with the standard torch	G8003-20011



Easy-fit torch, for 4200/4210 MP-AES,
G8003-70000



Easy-fit inert torch, for 4200/4210 MP-AES,
G8003-60018



Easy-fit torch, for 4100 MP-AES,
G8000-70002



Torch cleaning stand, for MP-AES torches,
G8003-68003



Torch clamp, G8000-64140



Torch clamp, for inert torch, G8010-60227

MP-AES Nebulizers and Supplies

Description	Part No.
OneNeb Series 2 inert concentric nebulizer	G8010-60293
Concentric nebulizer Recommended for routine analysis of most sample types where high sensitivity is required	G8000-70004
Conikal glass concentric nebulizer Replaces the nebulizer supplied with the Conikal sample introduction kit, p/n G8007AA #012 Recommended for routine analysis of most sample types where high sensitivity is required. Not suitable for use with HF digests or samples with suspended particulates	2010106800
Sample inlet fitting, for OneNeb Series 2 nebulizer Includes capillary connector with captive sample capillary tubing 0.5 mm id x 1/16 inch od x 750 mm length capillary tubing	G8010-60345
Conical adapter, 1/16 inch od sample line, for OneNeb Series 2 nebulizer Joins 1/16 inch od sample capillary to peristaltic pump tubing. Includes conical PTFE adapter with PTFE nut (female) and PTFE ferrule and lock ring	5043-0502
EzyFit Sample connector, for Conikal glass concentric nebulizer, 10/pk Fitted with 0.75 mm id x 700 mm length capillary tubing. Connects the peristaltic pump tubing for the sample line to the nebulizer. Used with the Conikal nebulizer, p/n 2010106800 only	9910107700
Nebulizer capillary tubing, per m. Joins to the peristaltic pump tubing for the sample to extend the length of the line to enable sample to be drawn from a container	2410020500



Concentric nebulizer, G8000-70004



Nebulizer gas connector, G8000-64142

OneNeb Series 2 inert concentric nebulizer,
G8010-60293**Humidifier Accessory**

Compatible with a range of Agilent ICP-OES, ICP-MS, and MP-AES instruments, Agilent's humidifier accessory can significantly improve signal stability for the analysis of challenging sample types.





Single-pass glass cyclonic spray chamber, G8000-70006



Double-pass spray chamber, G8000-70007



Inert single-pass cyclonic spray chamber, G8000-70008



Nebulizer locking nut for glass cyclonic spray chambers, G8003-60019

MP-AES Spray Chambers and Supplies

Description	Part No.
Double-pass glass cyclonic spray chamber Standard spray chamber supplied with 4200/4210 MP-AES Recommended for use with organic solvents, high matrix, or high TDS samples	G8000-70007
Single-pass glass cyclonic spray chamber For use with aqueous and low matrix samples where best sensitivity is required	G8000-70006
Inert double-pass cyclonic spray chamber For use with HF digests and high TDS samples	G8010-80034
Inert single-pass cyclonic spray chamber For use with HF digests and low TDS samples	G8000-70008
UniFit drain connector, 2.0 mm od x 0.86 mm id, 3/pk Drain connector, for inert spray chambers used with 4200/4210 MP-AES. Fitted with 480 mm length capillary tubing Connects the peristaltic pump tubing for the waste line to the spray chamber outlet	G8010-80036
Nebulizer locking nut, for glass cyclonic spray chambers Features two O-rings inside to centre and seal the nebulizer	G8003-60019
Replacement Helix seal, for inert spray chamber, 4/pk Secures the nebulizer in the side arm of the spray chamber	G8010-80042
Replacement Helix locking screw, for inert spray chamber	G8010-80043
Drain tube kit	G8000-64143

MP-AES Peristaltic Pump Tubing

Description	Unit	Part No.
Pump tubing, Solvaflex, orange/green, flared ends, for most sample types including aqueous, HF digests and some organic solvents	6/pk	3710068100
Pump tubing, blue/blue, for spray chamber waste, for most sample types including aqueous, HF digests and some organic solvents	12/pk	3710067900
Pump tubing, orange/green, for organic solvents and high TDS samples	12/pk	3710068000
Organic peristaltic pump tubing kit for MP-AES Includes PVC Solvaflex pump tubing with orange/green tabs for sample inlet and with blue/blue tabs for waste line. Suitable for low volatile organic solvents		G8003-67003
Pump tubing, PVC, white/white, for aqueous samples	12/pk	3710034400
Pump tubing, PVC, orange/green, for aqueous and high TDS samples	12/pk	3710068200
Pump tubing, PVC, orange/green, flared ends, for aqueous and high TDS samples	12/pk	3710068300
Pump tubing, PVC, blue/blue, for spray chamber waste with aqueous samples	12/pk	3710034600
Pump tubing, Marprene, orange/green tabs with flared ends, for semivolatile organic samples	12/pk	3710068500
Pump tubing, Marprene, blue/blue tabs, for semivolatile organic waste	12/pk	3710044400
Pump tubing, FPM, orange/green tabs with flared ends, for volatile organic samples	12/pk	3710068700
Pump tubing, FPM, blue/blue tabs, for volatile organic waste	12/pk	3710043900



Pump tubing, blue/blue, 3710067900



Pump tubing, orange/green, 3710068000

Application Kits for 4200/4210 MP-AES

Description	Used In	Kit Contents	Part No.
Routine aqueous sample introduction kit	Recommended for routine analysis of aqueous or acidic samples	Includes single-pass glass cyclonic spray chamber, Conikal nebulizer, and PVC peristaltic pump tubing with white/white tabs	G8003-67001
High sensitivity sample introduction kit, for routine aqueous samples	Recommended for high sensitivity analysis of aqueous or acidic samples	Includes single-pass glass cyclonic spray chamber, concentric nebulizer, and PVC peristaltic pump tubing with white/white tabs	G8003-67000
Inert sample introduction kit	Recommended for use with HF digests	Includes inert double pass spray chamber with ball joint socket, Easy-fit inert torch with alumina injector and clamp for inert torch Requires but does <i>not</i> include the inert OneNeb Series 2 nebulizer or pump tubing	G8003-67005



Inlet cooling air filter, G8000-68002



Onboard argon bottle for plasma ignition, G8000-70001

MP-AES Miscellaneous Supplies

Description	Comments	Part No.
Pre-optic window		G8000-64112
Inlet cooling air filter		G8000-68002
Onboard argon bottle, for plasma ignition	Contains 60 L of welding grade (99.0 %) argon Disposable Requires but does <i>not</i> include regulator and connecting hose (p/n G8000-63006)	G8000-70001*
Air inlet filter kit, for Agilent 4107 Nitrogen Generator	Includes replacement filter elements, large 5 µm particle filter (white filter element), small 1 µm particle filter (blue filter element), and activated carbon filter (mesh filter element) for residual oil vapor	G8001-64004

Drain tubing for aqueous solutions

Tubing, 1/8 inch id, 1/4 inch od, 1/16 inch wall, per m	Connects spray chamber to peristaltic pump waste line	3710031500
Tubing, 1/4 inch id, 1/16 inch od, per m	Connects sample tray to waste container	3710033400

Drain tubing for organic solvents

Tubing, 1/8 inch id, 1/4 inch od, per m	Connects spray chamber to peristaltic pump waste line	3710035400
Tubing, spray chamber to torch, per m	Connects sample tray to waste container	3710037800

*Not available for sale in China, Japan, or New Zealand

Multimode Sample Introduction System (MSIS)

The MSIS provides simultaneous vapor generation of environmentally sensitive hydride-forming elements including As, Se, and Hg with low $\mu\text{g/L}$ detection limits. It provides better performance through thin-film hydride technology, while offering a choice of three modes that eliminates changeover and allows routine and hydride elements to be determined using the same setup.



Multimode Sample Introduction System (MSIS)

MSIS Supplies to Support Routine Operations

Description	Comments	Part No.
Peristaltic pump tubing, black/black, 12/pk	Required to pump reagents to MSIS	3710027200
Peristaltic pump tubing, black/white, 12/pk	Required to pump waste from MSIS	3710068900
MSIS nebulizer bushing	Includes O-rings	G8479-20020
O-rings for MSIS nebulizer bushing	Includes 1 pair of replacement O-rings for the nebulizer bushing (1 internal and 1 external O-ring)	G8479-67000
MSIS drain tube assembly	Includes 0.2 m length of 1/8 in id drain tubing with bushing for waste outlet plus barb adapter and a single peristaltic pump tube, 2 bridged PVC with black/white tabs	G8479-60100
MSIS reaction cone assembly	Includes reaction cone, bushing, threaded barb adapter, and tubing connector for sample inlet	G8479-60300
MSIS reagent tubing kit	Includes O-rings for nebulizer bushing (1 pair); tubing connectors for reagent/sample inlets; and capillary tubing 0.01 inch id, 0.03 inch od, to join to peristaltic pump tubing for reductant inlet	G8479-68100

Description	Part No.
Multimode Sample Introduction System (MSIS)	G8000-63003



External Gas Control Module (EGCM)

External Gas Control Module (EGCM)

Add the EGCM to enable determination of organic solvents and sulfur. The EGCM injects air into the plasma, minimizing carbon buildup, and reducing background noise.

Description	Part No.
External Gas Control Module (EGCM)	G8000-63005

Organics Kit for 4100 MP-AES

The MP-AES Organics Kit includes all items required to adapt the 4100 for determination of organic solvents.

Description	Part No.
MP-AES Organics Kit Includes External Gas Control Module (EGCM), OneNeb nebulizer, and solvent resistant tubing	G8000-68004

AVS 4 Advanced Valve System, for 4200/4210 MP-AES

The Advanced Valve System (AVS 4) is an optional accessory for Agilent's 4200/4210 MP-AES instruments. It is designed to increase sample throughput and reduce matrix loads on the sample introduction system. It consists of a four port switching valve positioned between the peristaltic pump and the sample introduction components.

The AVS 4 rinses the sample introduction system during uptake of the next sample, reducing the rinse time and the total analysis time. Shorter analysis times means reduced cost and improved sample throughput.



Advanced valve system 4-port switching valve (AVS 4) fitted to a 4210 MP-AES

Supplies for AVS 4, for 4200/4210 MP-AES

Description	Comments	Part No.
Spare valve, 4 port, 2 position, for AVS 4 switching valve	Replacement valve assembly for AVS 4	G8493-60000
Stator and rotor for 4 port valve, for AVS 4 switching valve		G8493-60003
Nebulizer connection kit, for AVS switching valve		G8010-60304
Autosampler connection kit, for AVS switching valve	Includes super flangeless one-piece fitting, 1/4-28 Flat-Bottom, for 1/16 inch od tubing used to join the probe line to the valve assembly	G8010-60306
Waste tube kit, for 4 port AVS switching valve	Includes swivel barb adaptor fitted with 2 m length of 1/8 inch id PVC tubing for the AVS waste line	G8010-60334
Sample/rinse connection kit, for AVS switching valve, 2/pk	Includes super flangeless one-piece fitting, 1/4-28 Flat-Bottom, for 1/16 inch od tubing fitted with 1/16 inch od PFA tubing and a conical adapter to join to the peristaltic pump tubing	G8010-60335
Autosampler peristaltic pump connection kit	Allows the user to bypass the switching valve when required, e.g. for wavelength calibration. Includes ferrule fitting for the autosampler line plus a conical PTFE adapter to enable connection to the peristaltic pump tubing	G8010-60348
UniFit sample line, 0.75 mm id x 1/16 inch od	Replacement part for Unifit nebulizer connection kit (p/n G8010-60336) supplied with the AVS 4	8003-0493

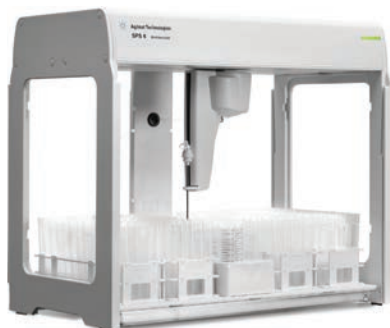
(Continued)

Supplies for AVS 4, for 4200/4210 MP-AES

Description	Comments	Part No.
Nebulizer adaptor kit, for AVS switching valve	Includes super flangeless one-piece fitting, 1/4-28 flat-bottom, for 1/16 inch od tubing and 1/16 inch od FEP tubing sleeve used to join the sample capillary of the OneNeb nebulizer to the valve assembly	G8010-60333
Rotor seal for 4 port valve, for AVS 4 switching valve		G8493-60002
Drip tray, for 4 port valve of AVS 4 switching valve		G8010-20080

Miscellaneous Supplies for AVS Switching Valves, for 4200/4210 MP-AES

Description	Comments	Part No.
Rinse (10 L) and waste (20 L) containers for AVS	Includes 10 L HDPE container for rinse solution and 20 L HDPE container for waste both fitted with safety caps to prevent vapors reaching the lab Supply lines fitted with sinkers to ensure the capillary draws from the base of the container	G8494-60005
Reagent uptake capillary tube, 1.6 mm od x 1.0 mm id x 1400 mm long, with heavy PTFE sinker		G8494-60007
Mounting clamp, for AVS 4/6/7 switching valve		G8494-60004



Autosampler Supplies

SPS 4 Autosampler Supplies

The next-generation SPS 4 is a high-performance autosampler for atomic spectroscopy applications. Designed to meet the needs of high-throughput laboratories requiring a fast, high-capacity (up to 360 samples or 768 microtiter wells), reliable autosampler. Small, quiet, easy-to-use, and affordable, the SPS 4 is suitable for ultratrace analysis by ICP-MS and rugged and robust enough for FAAS, MP-AES, and ICP-OES users.

Built around an innovative gantry design that supports the mechanical components between two rigid pillars, the SPS 4 provides improved accuracy and precision, high speed, ease of access, and corrosion resistance. All contained within a footprint that is nearly 40 % smaller than other autosamplers in its class.

SPS 4 Autosampler Probes

Description	Notes	Part No.
SPS 4 probe, 0.25 mm id, red markers, inert, FEP sleeved,	Recommended when using the Agilent SPS 4 autosampler with ICP-MS instruments	G8410-80100
SPS 4 probe, 0.5 mm id, yellow markers, inert, FEP sleeved	Recommended when using the Agilent SPS 4 autosampler with ICP-MS instruments	G8410-80101
SPS 4 probe, 0.8 mm id, green markers, inert, FEP sleeved	Recommended when using the Agilent SPS 4 autosampler with AA, ICP-OES, MP-AES, and ICP-MS instruments	G8410-80102
SPS 4 probe, 1.0 mm id, blue markers, inert, FEP sleeved	Recommended when using the Agilent SPS 4 autosampler with AA, ICP-OES, and MP-AES instruments	G8410-80103
SPS 4 probe, 1.2 mm id, black markers, inert, FEP sleeved	Recommended when using the SPS 4 autosampler with AA, ICP-OES, and MP-AES instruments with viscous solutions and high matrix samples	G8410-80104

Miscellaneous SPS 4 Tubing

Description	Notes	Part No.
Flexible ducting, PVC, 50 mm id, for SPS 4 autosampler, 5 m length	Spare ducting to enable removal of fumes from the autosampler with the cover fitted. Fitted with 56mm od cuffs.	5043-0065
Waste tubing, PVC, for SPS4, 8 mm od, 5 mm id, 2 m length	Replacement tubing to connect from waste outlet of rinse station of SPS 4 autosampler	G8410-80122
Tubing, for supply of rinse solution to rinse station of SPS 4, 2.5 mm id, 1 m length	Replacement tubing to connect from rinse solution supply to inlet of rinse station of SPS 4 autosampler	G8410-80123
Tubing, solvent-resistant, 2.36 mm (0.093 inch) id, 2 m length	Replacement tubing for inlet solvent line to rinse station of SPS 4 autosampler. Allows use of low volatile organic solvents in rinse station	G8410-20012
Tubing, solvent-resistant, 4.75 mm (0.187 inch) id, 2 m length	Replacement tubing for waste solvent outlet of rinse station of SPS 4 autosampler. Allows use of low volatile organic solvents in rinse station	G8410-20013

**SPS 4 Autosampler Probe Compatibility**

Probe Type	Flame AAS	MP-AES	ICP-OES	ICP-MS
0.25 mm id				✓
0.5 mm id				Standard
0.8 mm id	Standard	Standard	Standard	✓
1.0 mm id	✓	✓	✓	✓
1.2 mm id	✓	✓	✓	
✓ Compatible part				



SPS 4 Standard Racks and Compatible Vessels

Description	Comments	Part No.
Standards rack, 34 position, for SPS 4 autosampler	Rack provides 12 positions for 50 mL, 30 mm od, centrifuge tubes plus 22 positions for 18 mm od test tubes. Standard rack for AA/MP-AES and ICP-OES configuration (not supported with the ICP-MS MassHunter software)	G8410-40000
Standards rack, 5 position, for SPS 4 autosampler	Rack provides five positions for 250 mL, 60 mm od, narrow neck sample containers. Standard rack for ICP-MS configuration (not supported with the atomic absorption SpectrAA software)	G8410-40001
Sample bottle, 250 mL, for 5 x 60 mm standard rack	Narrow neck, 60 mm od, LDPE, for five position standard rack used with SPS 4 autosampler	5043-0064

Optional Update Kits for the SPS 4

Description	Comments	Part No.
High uptake volume rinse kit, for SPS 4	Recommended for use with the AVS 6/7, SVS 2+, or ISIS 3. Allows rinse uptake rate to be increased to 25mL/min. Includes sample quantity wide bore peristaltic pump tubing with purple/black tabs (four pump tubes only), barb connectors, and PTFE tubing 2 m	G8410-68260
SPS 4 rinse tube kit, for low volatile organics	Allows use of low volatile organic solvents in rinse station. Includes capillary tubing 1 m, sample quantity of 3-bridged grey/grey PVC Solvaflex peristaltic pump tubing (four pump tubes only), barb connector 2.5–1.5 mm, and solvent-resistant tubing for solvent inlet and waste outlet from the rinse station	G8410-68261
Pump drain kit for SPS 4 autosampler	Provides the components required to allow the liquid overflow to be pumped from the rinse station. Includes sample quantity of wide bore peristaltic pump tubing with purple/white tabs (four pump tubes only), barb connectors, and PVC Solvaflex tubing 2.5 m to enable connection to a remote pump (not supplied)	G8410-68262
SPS 4 Autosampler cover kit	Encloses the autosampler to help reduce sample and standard contamination from dust and drafts. Provision for optional purge or exhaust connection to remove corrosive or solvent fumes (requires but does not include the ducting hose, p/n 5043-0065, which should be ordered separately)	G8410-60100

Optional Update Kits for the SPS 4 used with ICP-MS (Only)

Description	Comments	Part No.
Well plate startup kit for SPS 4	Allows sampling from deep well 96 well plates. Includes well plates 10/pk, well plate adapter, and sample probe. Supported when using MassHunter software with the ICP-MS	G8410-68270
Microflow nebulizer PFA (200) with SPS 4 probe kit	Microflow PFA(200) nebulizer, with integrated probe for SPS 4 autosampler, flow rate 200 µL/min, sample uptake tube ends as a sampling probe. Used with 7700,7800,7900, and 8800 Series ICP-MS for high purity and hydrofluoric acid samples.	G3139-68000
Nebulizer probe mount kit for SPS 4 autosampler	Required to mount a nebulizer-integrated sample probe (supplied separately) onto the probe arm of the SPS 4 autosampler. Note, order G3139-68000 if ordering the PFA nebulizer together	G8410-60180

Well Plate Supplies for use with SPS 4 (ICP-MS)

Description	Comments	Part No.
Well plate tray adaptor kit for SPS 4	Allows 96 position deep-well plates to be positioned on the sample tray of the SPS 4 autosampler (raises the height of the well plate on the autosampler). Requires, but does not include the sample probe.	G8410-40003
SPS 4 sample probe, suits SPS 4 microtiter tray	Required when using the SPS 4 autosampler with microtiter tray for sampling from a 96 position well plate. Requires, but does not include the well plate tray adaptor kit or any compatible well plates.	G8410-80105
Well plates, 96 position, 0.5 mL, polypropylene, 10/pk	Spare well plates suitable for use with the SPS 4 autosampler when using the optional microtiter tray for sampling from a 96 position well plate.	5042-1386
Well plates, 96 position, 0.5 mL, polypropylene 120/pk	Spare well plates suitable for use with the SPS 4 autosampler when using the optional microtiter tray for sampling from a 96 position well plate.	5042-1385

Miscellaneous SPS 4 Supplies

Description	Comments	Part No.
Single port fixed wash reservoir for SPS 4		G8410-60140
Dual port fixed wash reservoir for SPS 4		G8410-60150
Standard rack location mat for SPS 4		G8410-80111
Spill tray kit for SPS 4 autosampler		G8410-80605
Tube anchor for SPS 4 autosampler, 2/pk	Secures transfer tubing from probe to instrument on arm of probe carriage to eliminate tangling.	G8410-40004
Cable ducting for SPS 4 autosampler		G8410-40005
Barb connector, straight through, 4.8–2.4 mm id		0100-2846
Barb connector, straight-through, 2.4 mm id		0100-2848
Nipple, 5 mm id, PVDF, SPS 4 rinse station	Replacement nipple for outlet waste from rinse station of SPS 4 autosampler.	G8410-80120
Nipple, 2.5 mm id, polypropylene, SPS 4 rinse station	Replacement nipple for inlet rinse supply to rinse station of SPS 4 autosampler.	G8410-80121
Barb connector, 2.5 mm–1.5 mm id, for SPS 4	Straight-through connector for rinse tube kit used with low volatile organics when using low volatile organic solvents in SPS 4 rinse station.	G8410-80124
Cable ties, natural, polypropylene, 10/pk		G8410-67001

SPS 3 Autosampler Supplies

The fast spectroscopy autosampler from Agilent meets the diverse requirements of high-throughput analytical laboratories.

SPS 3 Start-up and Operating Supplies Kit

Description	Kit Quantity	Unit	Part No.
SPS 3 start-up and operating supplies kit			190065400
Kit Contents			
0.8 mm id inert probe, PTFE-sleeved	1	each	9910111900
Pump tubing, PVC Solvaflex, 3-bridged, gray/gray	2	12/pk	3710049000
Silicon tubing, 1 mm id, 3 mm od	1	each	3710026400
Tubing, 1/8 inch id, 1/4 inch od, 1/16 inch wall, per m	2	meter	3710031500
Nebulizer capillary tubing, per m	2	meter	2410020500
Rinse reservoir, 10 L	1	each	6610011800
Polypropylene tubes, 16 mm od	1	1,000/pk	190049700
Sample rack for 30 mm od tubes, 21 positions	3	each	6610026600
Centrifuge tubes, screw-capped, 29 mm od, 50 mL polypropylene	1	500/pk	190065200



SPS 3 Autosampler for AA, MP-AES, ICP-OES, and UV-Vis instruments



Autosampler cover, 910245400

Optional Accessories for SPS 3

Description	Comments	Part No.
Autosampler cover, transparent	Prevents contamination of samples and standards from dust and drafts Has provision for optional purge connection and/or exhaust outlet to enable removal of corrosive or solvent fumes	910245400
Exhaust port connection	Installs on rear panel of cover and allows safe removal of corrosive or solvent fumes; suitable for connection to 2 inch (50 mm) diameter exhaust ducting	9910130600

SPS 3 Autosampler Probes

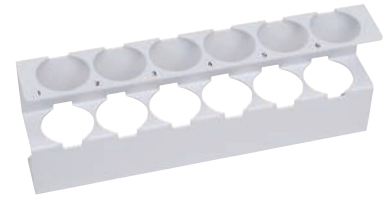


0.8 mm id inert probe, PTFE-sleeved,
9910111900

Description	Comments	Part No.
0.8 mm id inert probe, PTFE-sleeved	For use with MP-AES and ICP-OES instruments without diluter	9910111900
1.0 mm id inert probe, PTFE-sleeved	For use with AA, MP-AES, ICP-OES, and UV-Vis instruments (or diluter)	9910112000
1.3 mm id inert probe, PTFE-sleeved	For use with viscous solutions and high matrix samples	9910130900
1.2 mm id inert, carbon fiber probe	For use with strong acid digests Straighter than a PTFE probe with good rigidity, meaning less chance of damage if it hits a tube Replacement probe only Requires carbon fiber update kit to be fitted	G8480-80002
Carbon fiber probe update kit	Allows installation of a carbon fiber probe in place of a standard PTFE probe. Includes 3.0 mm od x 1.2 mm id carbon fiber probe, mounting block, nut and ferrule, 1.5 m x 0.8 mm id FEP sample tubing, cable ties, and tube anchors	G8480-80001

Standard Racks for SPS 3 Autosampler

Description	Part No.
Standard rack for 16 mm od tubes, 11 positions	810166900
Standard rack for 29 mm od tubes, 6 positions	810167000



Standard rack for 29 mm od tubes, 810167000

Diluter Spares

Description	Kit Contents	Part No.
Syringe, 20 mL		4710003000
Replacement tubing kit for auto diluter, screw fittings	Includes all tubing and connectors	9910083100
Rinse reservoir, 10 L		6610011800



Rinse reservoir, 6610011800

Miscellaneous SPS 3 Supplies

Description	Use With	Part No.
Tubing, 1/8 inch id, 1/4 inch od, 1/16 inch wall, per m	For outlet rinse vessel	3710031500
Silicon tubing, 1 mm id, 3 mm od	For connecting nebulizer capillary to SPS probe line	3710026400
Replacement spill tray		6610025100



Replacement spill tray, 6610025100



Integrated Autosampler (I-AS) Supplies

The integrated autosampler (I-AS) for ICP-MS is ideal for ultratrace analysis and small sample volumes (as low as 0.5 mL). It features a pumped rinse station and offers flexible rack configurations with a maximum capacity of 89 vials, plus three rinse vials. (Not compatible with Agilent AA, MP-AES, and ICP-OES instruments).

Integrated Autosampler (I-AS) Supplies



Tray B, 53-position for 18 mL vials, polypropylene,
G3160-80061



Peristaltic pump tubing set with connectors,
G3160-65326

Description	Unit	Common Part No.
Tray A, 89-position, for 6 mL vials, polypropylene		G3160-80060
Tray B, 53-position, for 18 mL vials, polypropylene		G3160-80061
Tray C, 18-position for 50 mL vials, polypropylene		G3160-80062
Tray D, 79 x 2 mL + 10 x 18 mL positions, polypropylene		G3160-80063
Tray E, 79 x 6 mL + 10 x 18 mL positions, polypropylene		G3160-80064
Tray F, 15-position, for use in special semiconductor applications, holds 15 vials of up to 48 mm od x 55 mm high, polypropylene		G3160-80065
Tray G, 28-position, for 20 mL PFA vials of up to 28 mm od, 58 mm tall, polypropylene		G3160-80066
Vial, PFA, 1.5 mL, for use with Tray D	10/pk	G3160-65317
Vial, polypropylene, 6 mL, for use with tray A and E	200/pk	G3160-65303
Vial, polypropylene, 18 mL, for use with tray B, D, and E	55/pk	G3160-65304
Vial, polypropylene, 50 mL, for use with tray C	20/pk	G3160-65305
Vial, polyethylene, 2 mL, for use with tray D	200/pk	G3160-65315
Needle, PFA, 0.3 mm id, standard probe		G3160-65306
Rinsing bottle, 100 mL	6/pk	G3160-65307
Tray cover		G3160-65321
Rinse fluid inlet/outlet tubing (for I-AS with diaphragm pump)		G3160-65320
Needle, PFA, 0.8 mm id, for use with the ISIS		G3160-65324
Tubing holder, PEEK, for use with MicroFlow nebulizer (without a sampling probe) and 2 mL vials		G3160-65325
Needle holder		G3160-80041
Holder, for carry tray cover		G3160-60015
Peristaltic pump tubing set with connectors	1 set	G3160-65326
Peristaltic pump tubing set with connectors	5/pk	G3160-65327
Drain tubing, Tygon, from peristaltic pump to rinse bottle or drain bottle	2/pk	G3160-65328
Serial-USB converter cable, for use with G7201A MassHunter		G3160-80200
I-AS table, for 7900		G3160-60016

ASX-500 Series Autosampler Supplies

The ASX-500 Series autosampler is fully automated, making it ideal for medium to high sample throughput applications. It features a pumped rinse station and offers flexible rack configurations with a maximum capacity of four racks providing up to 360 vial positions with 5 x 250 mL bottle positions and bottles for rinse and tune solutions.

ASX-500 Series Autosampler Supplies

Description	Common Part No.
Sample rack, 21-position, 50 mL vials	G3286-80103
Sample rack for 25 mm od tubes, 24 positions	6610026500
Sample rack for 20 mm od tubes, 40 positions	6610025500
Sample rack, 60-position, 14 mL vials	G3286-80106
Sample rack for 13 mm od tubes, 90 positions	6610026400
Sample probe, 0.8 mm id (red band)	G3286-80100
Sample probe, 0.3 mm id (black band)	G3286-80101
Sample probe, 0.5 mm id (blue band)	G3286-80102
Carbon fiber sample probe, 0.8 mm id (red band)	G3286-80110
Carbon fiber sample probe, 0.3 mm id (black band)	G3286-80111
Carbon fiber sample probe, 0.5 mm id (blue band)	G3286-80112
Carbon fiber sample probe, 1.0 mm id (2 blue bands) For use with G3286-80300 Z-drive assembly	G3286-80119
Rinse/drain tubing hookup kit	G3286-80117
Drain pump tubing and connector kit (Tygon)	G3286-80118
Z-axis drive assembly with nylon cable, PEEK, antikink	G3286-80330
Rinse station	G3286-80224
USB 2.0 cable, 10 feet, for use with G7201A MassHunter	G1680-63720



ASX-520 Autosampler



Sample rack, 60-position, G3286-80106



Sample probe, G3286-80102

Drain pump tubing and connector kit (Tygon),
G3286-80118

Rinse station, G3286-80224

Common Autosampler Supplies



Sample rack, 6610025400 (shown with the optional rack overlay kit, p/n 6610026100, fitted)



Rack overlay for 60-position sample rack, 6610026100



Pump tubing, PVC Solvaflex, 3710049000

Racks for SPS 3/4 and ASX 500 Autosamplers

Description	Part No.
Sample Racks	
Sample rack for 13 mm od tubes, 90 positions	6610026400
Sample rack for 16 mm od tubes, 60 positions	6610025400
Sample rack for 20 mm od tubes, 40 positions	6610025500
Sample rack for 25 mm od tubes, 24 positions	6610026500
Sample rack for 30 mm od tubes, 21 positions	6610026600

Rack Overlays for Sample Racks

Rack overlay for 60-position sample rack Allows 13 mm od tubes to be used in 60-position rack (2 recommended per rack)	6610026100
Rack overlay for 40-position sample rack Allows 18 mm od tubes to be used in 40-position rack (2 recommended per rack)	6610026000

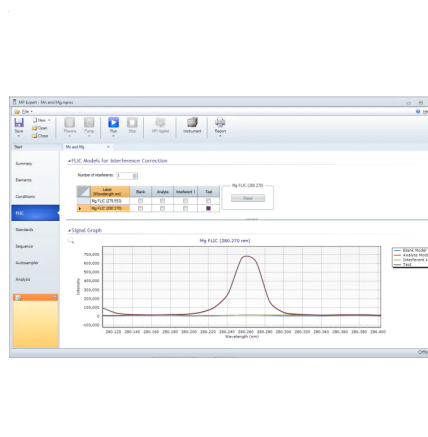
Peristaltic Pump Tubing for SPS 3/4

Description	Use With	Part No.
Peristaltic pump tubing, PVC Solvaflex, 3 bridged, purple/white tabs, 12/pk	For use with SPS 4 when pumping acidic or aqueous based rinse	5043-0063
Peristaltic pump tubing, PVC Solvaflex, 3 bridged, black/black tabs, 12/pk	For use with SPS 4 when pumping low volatile organic solvents	3710034800
Pump tubing, PVC Solvaflex, 3-bridged, gray/gray	Standard tubing supplied with the autosampler for the rinse pump. For use with aqueous samples on AA, MP-AES, ICP-OES, and ICP-MS instruments	3710049000
Pump tubing, Santoprene, 3-bridged, gray/gray, 6/pk	For ketone-based solvents on AA, MP-AES, ICP-OES, and ICP-MS instruments	3710057500
Pump tubing, PVC Solvaflex, 3-bridged, orange/yellow, flared ends, 12/pk	For use with low volatile organic solvents on AA, MP-AES, ICP-OES, and ICP-MS instruments	3710069000
Pump tubing, PVC Solvaflex, 3-bridged, yellow/yellow, 12/pk	For use with low volatile organic solvents on AA, MP-AES, ICP-OES, and ICP-MS instruments	3710069300
Pump tubing, PVC Solvaflex, 3-bridged, purple/black, 12/pk	For use with aqueous samples on UV instruments	3710052000
Pump tubing, FPM, 3-bridged, black/black, flared ends, 12/pk	For use with aromatic organic solvents on AA, MP-AES, ICP-OES, and ICP-MS instruments	3710069100
Pump tubing, PVC Solvaflex, 3-bridged, black/black, flared ends, 12/pk	For use with low volatile organic solvents on AA, MP-AES, ICP-OES, and ICP-MS instruments	3710069200

MP Expert Software

Agilent MP Expert software is supplied with all MP-AES instruments and is your gateway to complete control of your analysis. This software includes proprietary features, such as FLIC background correction, to ensure you are always able to get the right result.

With intuitive workflows and assistance at every step from method setup to results processing, you will always be in the driver's seat and have total confidence in your results.



Features

- Wavelength and optimum parameters are preset and automatically recalled as you select the elements you need
- A comprehensive spectral library highlights potential interferences as you select each wavelength
- Spectral interferences are easily corrected using the Inter Element Correction (IEC) or Fast Linear Interference Correction (FLIC) techniques
- Accessory controls, such as those for the AVS 4 switching valve and the IsoMist temperature-controlled spray chamber, are included in the software for simplified setup
- Quality control standards can be easily included to verify and confirm results during analysis
- Results are clearly displayed on screen, with large format number results for the current sample enabling easy tracking, even across a busy laboratory
- A diagnostics dashboard gives real-time feedback on instrument status to ensure maximum instrument uptime
- Easily transfer results to a LIMS or other application using the flexible data exporting options
- MP Expert software is available in nine languages, so anybody can be confident running the system

По вопросам продаж и поддержки обращайтесь:

Алматы (7273)495-231
Архангельск (8182)63-90-72
Астрахань (8512)99-46-04
Барнаул (3852)73-04-60
Белгород (4722)40-23-64
Брянск (4832)59-03-52
Владивосток (423)249-28-31
Волгоград (844)278-03-48
Вологда (8172)26-41-59
Воронеж (473)204-51-73
Екатеринбург (343)384-55-89
Иваново (4932)77-34-06
Ижевск (3412)26-03-58
Иркутск (395)279-98-46
Россия (495)268-04-70

Казань (843)206-01-48
Калининград (4012)72-03-81
Калуга (4842)92-23-67
Кемерово (3842)65-04-62
Киров (8332)68-02-04
Краснодар (861)203-40-90
Красноярск (391)204-63-61
Курск (4712)77-13-04
Липецк (4742)52-20-81
Магнитогорск (3519)55-03-13
Москва (495)268-04-70
Мурманск (8152)59-64-93
Набережные Челны (8552)20-53-41
Нижний Новгород (831)429-08-12
Киргизия (996)312-96-26-47

Новокузнецк (3843)20-46-81
Новосибирск (383)227-86-73
Омск (3812)21-46-40
Орел (4862)44-53-42
Оренбург (3532)37-68-04
Пенза (8412)22-31-16
Пермь (342)205-81-47
Ростов-на-Дону (863)308-18-15
Рязань (4912)46-61-64
Самара (846)206-03-16
Санкт-Петербург (812)309-46-40
Саратов (845)249-38-78
Севастополь (8692)22-31-93
Симферополь (3652)67-13-56
Казахстан (7172)727-132

Смоленск (4812)29-41-54
Сочи (862)225-72-31
Ставрополь (8652)20-65-13
Сургут (3462)77-98-35
Тверь (4822)63-31-35
Томск (3822)98-41-53
Тула (4872)74-02-29
Тюмень (3452)66-21-18
Ульяновск (8422)24-23-59
Уфа (347)229-48-12
Хабаровск (4212)92-98-04
Челябинск (351)202-03-61
Череповец (8202)49-02-64
Ярославль (4852)69-52-93