

XF

Технические характеристики

По вопросам продаж и поддержки обращайтесь:

Алматы (7273)495-231
Архангельск (8182)63-90-72
Астрахань (8512)99-46-04
Барнаул (3852)73-04-60
Белгород (4722)40-23-64
Брянск (4832)59-03-52
Владивосток (423)249-28-31
Волгоград (844)278-03-48
Вологда (8172)26-41-59
Воронеж (473)204-51-73
Екатеринбург (343)384-55-89
Иваново (4932)77-34-06
Ижевск (3412)26-03-58
Иркутск (395)279-98-46
Россия (495)268-04-70

Казань (843)206-01-48
Калининград (4012)72-03-81
Калуга (4842)92-23-67
Кемерово (3842)65-04-62
Киров (8332)68-02-04
Краснодар (861)203-40-90
Красноярск (391)204-63-61
Курск (4712)77-13-04
Липецк (4742)52-20-81
Магнитогорск (3519)55-03-13
Москва (495)268-04-70
Мурманск (8152)59-64-93
Набережные Челны (8552)20-53-41
Нижний Новгород (831)429-08-12
Киргизия (996)312-96-26-47

Новокузнецк (3843)20-46-81
Новосибирск (383)227-86-73
Омск (3812)21-46-40
Орел (4862)44-53-42
Оренбург (3532)37-68-04
Пенза (8412)22-31-16
Пермь (342)205-81-47
Ростов-на-Дону (863)308-18-15
Рязань (4912)46-61-64
Самара (846)206-03-16
Санкт-Петербург (812)309-46-40
Саратов (845)249-38-78
Севастополь (8692)22-31-93
Симферополь (3652)67-13-56
Казахстан (7172)727-132

Смоленск (4812)29-41-54
Сочи (862)225-72-31
Ставрополь (8652)20-65-13
Сургут (3462)77-98-35
Тверь (4822)63-31-35
Томск (3822)98-41-53
Тула (4872)74-02-29
Тюмень (3452)66-21-18
Ульяновск (8422)24-23-59
Уфа (347)229-48-12
Хабаровск (4212)92-98-04
Челябинск (351)202-03-61
Череповец (8202)49-02-64
Ярославль (4852)69-52-93

XF Software

Seahorse Wave Desktop Software

RUO

Agilent Seahorse Wave Desktop software transforms complex cellular metabolism data into publishable results. Wave desktop is the assay design, data analysis, and file management software for all Agilent Seahorse XF Analyzers.

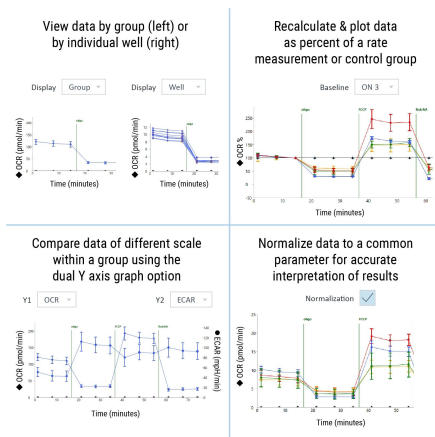
The latest release of Wave Desktop provides new analysis capabilities in a redesigned interface that will streamline your XF workflow, regardless of your experience level.

For Research Use Only. Not for use in diagnostic procedures.



Features

- One, central software program for analysis of XF data generated by any Agilent Seahorse XF Analyzer
- Easy-to-use user interface provides a more organized, intuitive experience without need for in-depth training
- Predefined assay templates for each Agilent Seahorse assay kit ensures accurate, consistent experiment setup and simplified analysis
- Streamline your experiment design workflow using the catalog of Agilent Seahorse assay kit reagents or save your own custom assay reagents to the catalog, eliminating repetitive data entry
- New releases of Wave and report generator software are automatically downloaded to your PC, keeping you up-to-date
- Seamless data export options to preferred graphing and analysis software programs, such as GraphPad Prism and Excel, enable custom reporting and analysis
- Investigate trends, ask new questions, and engage your data in new ways using analysis views and advanced calculators
- Embedded Seahorse XF report generators enable you to create customizable summary reports directly from Wave, simplifying interpretation and extending the impact of your results to anyone you share it with



XF Cell Mito Stress Test



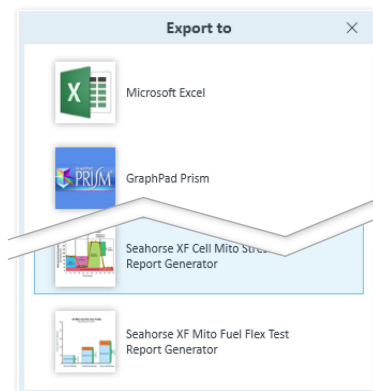
XF ATP Rate Assay



XF Cell Energy Phenotype Test



XF Glycolytic Rate Assay



Seahorse Wave Controller Software 2.6 RUO

Agilent Seahorse Wave Controller 2.6 software is the instrument control and data acquisition software for Agilent Seahorse XFe Analyzers with Windows 10 64-bit OS only.

This XF instrument control software provides an intuitive interface with predefined assay templates and streamlined experimental design for simplified metabolic analysis.

Supported Wave Controller Software for:

Seahorse XFe96 Analyzers is version 2.6.3

Seahorse XFe24 Analyzers is version 2.6.1

For Research Use Only. Not for use in diagnostic procedures.



Features

- Instrument control software for Agilent Seahorse XFe96 and XFe24 Analyzers (Windows 10 64-bit)
- Easy-to-use user interface provides an organized, intuitive experience without the need for in-depth training
- Stable, accurate temperature performance for XF assay temperatures between 16–42 °C, enabling metabolic analysis of a variety of samples
- Predefined assay templates for each Agilent Seahorse XF assay kit ensure accurate, consistent experiment setup and simplified analysis
- Streamline your experiment design workflow using the catalog of Seahorse assay kit reagents or save your own custom assay reagents to the catalog, eliminating repetitive data entry
- Configure network access to receive automated system prompts from the XFe controller when user interaction is required and when the assay result file is ready following completion of an assay
- New releases of Wave and report generators are automatically downloaded to your XFe controller, ensuring your software is always up-to-date (requires internet access)
- Add and remove measurement cycles from your instrument protocol based on real-time result data acquired during an XF assay

Data Export Format	Microsoft Excel Workbook (32 & 64-bit): versions 2010, 2011, 2013, 2016 Graphpad Prism (Version 7)	Seahorse XF Report Generators	Graphpad Prism (Version 6)
Memory	16 GB		
Operating System	Windows 10		
Processor	Intel Core i5		
Software Version	Seahorse XFe96 Analyzers is version 2.6.3	Seahorse XFe24 Analyzers is version 2.6.1	
Supported Excel Version	Excel 2010 32-bit Excel 2011 64-bit Excel 2016 32-bit	Excel 2010 64-bit Excel 2013 32-bit Excel 2016 64-bit	Excel 2011 32-bit Excel 2013 64-bit

XF Software

Seahorse Wave Controller Software 2.4 RUO

Agilent Seahorse Wave controller software is the instrument control and data acquisition software for Agilent Seahorse XFe Analyzers with Windows 7 32-bit OS only.

This XF instrument control software provides an intuitive interface with predefined assay templates and streamlined experimental design for simplified metabolic analysis.

Supported Wave Controller Software for:

Seahorse XFe96 Analyzers is version 2.4.3

Seahorse XFe24 Analyzers is version 2.4.2

For Research Use Only. Not for use in diagnostic procedures.



Features

- Instrument control software for Agilent Seahorse XFe96 and XFe24 Analyzers (Windows 7 32-bit)
- Easy-to-use user interface provides an organized, intuitive experience without the need for in-depth training
- Stable, accurate temperature performance for XF assay temperatures between 16–42 °C, enabling metabolic analysis of a variety of samples
- Predefined assay templates for each Seahorse XF Assay kit ensure accurate, consistent experiment setup and simplified analysis
- Streamline your experiment design workflow using the catalog of Seahorse assay kit reagents or save your own custom assay reagents to the catalog, eliminating repetitive data entry
- Configure network access to receive automated system prompts from the XFe controller when user interaction is required, and the assay result file following completion of an assay
- New releases of Wave and report generators are automatically downloaded to your XFe controller, ensuring your software is always up-to-date (requires internet access)
- Add and remove measurement cycles from your instrument protocol based on real-time result data acquired during an XF assay

Data Export Format	Microsoft Excel Workbook (32 & 64-bit): versions 2010, 2011, 2013, 2016 Graphpad Prism (Version 7)	Seahorse XF Report Generators	Graphpad Prism (Version 6)
Memory	4 GB		
Operating System	Windows 7 32-bit only		
Processor	Intel i3		
Software Version	Seahorse XFe96 Analyzers is version 2.4.3	Seahorse XFe24 Analyzers is version 2.4.2	
Supported Excel Version	Excel 2010 32-bit Excel 2011 64-bit Excel 2016 32-bit	Excel 2010 64-bit Excel 2013 32-bit Excel 2016 64-bit	Excel 2011 32-bit Excel 2013 64-bit

XF Software

MitoXpress Xtra & pH-Xtra Data Visualization Tool RUO

The Agilent MitoXpress Xtra and pH-Xtra data visualization tool is data analysis software for the Agilent MitoXpress Xtra oxygen consumption assay and the Agilent pH-Xtra glycolysis assay.

This data visualization tool is used to extract metabolic rates and kinetic signal curves from raw fluorescence data measured on a plate reader.

For Research Use Only. Not for use in diagnostic procedures.



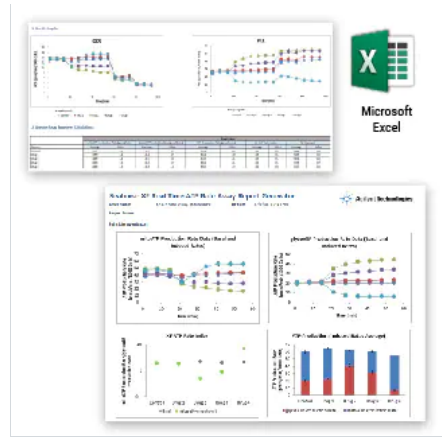
Features

- Supports the analysis of raw, experimentally derived fluorescence data acquired from various plate reader manufacturers
- Import raw plate reader data from the MitoXpress Xtra assay to calculate oxygen consumption rates, indicative of mitochondrial respiration
- Import raw plate reader data from the pH-Xtra glycolysis assay to calculate extracellular acidification rates, indicative of glycolytic flux
- Transfer result data from the data visualization tool to GraphPad Prism or other software programs for more in-depth statistical analysis or graphing tasks
- Review, reanalyze, and share data without requiring special software programs or licenses

Display Resolution	1280 x 800 (minimum) pixels		
Hard Disk Space Requirements	1.75 GB		
Memory	4 GB		
Operating System	Windows 10		
Processor	Intel i3		
Supported Excel Version	Excel 2013 32-bit	Excel 2013 64-bit	Excel 2016 32-bit
	Excel 2016 64-bit		

XF Software

Seahorse XF Real-Time ATP Rate Assay Report Generators RUO



The Agilent Seahorse XF Real-Time ATP rate assay report generator is the data analysis software for the Agilent Seahorse XF Real-Time ATP rate assay.

This report generator automatically converts experimentally derived oxygen consumption rate (OCR) and extracellular acidification rate (ECAR) data into total ATP production rates, and pathway-specific mitoATP and glycoATP production rates, thereby transforming the raw kinetic data into powerful summary reports that simplify data analysis and interpretation.

For Research Use Only. Not for use in diagnostic procedures.

Features

- Automatic calculation of the key parameters of the XF Real-Time ATP rate assay kit, eliminates inefficient and repetitive manual calculations and transforms raw kinetic data into interpretable results
- Data is presented as an organized, customizable, presentation-ready report summarizing your data so that anyone can understand
- Standardized analysis templates ensure consistent, reproducible data analysis across XF Real-Time ATP rate assay result files
- Review or reanalyze result data directly in the report generator file without any specialized software programs or licenses, for more efficient collaboration
- Supports analysis of XF Real-Time ATP rate assays with an acute compound injection (induced protocol), rate data normalized to a cellular or mitochondrial parameter, and rate data produced on Agilent Seahorse XF96, XFe96, XFe24, and XFp Analyzers

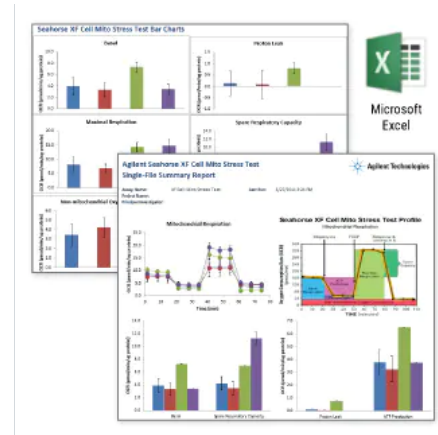
Display Resolution	1280 x 800 (minimum) pixels		
Hard Disk Space Requirements	175 GB		
Memory	4 GB		
Operating System	Windows 7	Windows 8.1	Windows 10
Processor	Intel i3		
Supported Excel Version	Excel 2010 32-bit Excel 2011 64-bit Excel 2016 32-bit	Excel 2010 64-bit Excel 2013 32-bit Excel 2016 64-bit	Excel 2011 32-bit Excel 2013 64-bit

Seahorse XF Cell Mito Stress Test Report Generators

RUO

The Agilent Seahorse XF Cell Mito Stress Test report generator is a software tool that automatically calculates and reports the assay parameters of the Agilent Seahorse XF Cell Mito Stress Test. This XF report generator transforms raw kinetic data from one, or multiple result files, into powerful summary reports of mitochondrial function. It therefore, simplifies your data analysis and interpretation and eliminates manual, error-prone analysis methods.

For Research Use Only. Not for use in diagnostic procedures.



Features

- Automatic calculation of key parameters of the XF Cell Mito Stress Test eliminates inefficient and repetitive manual calculations and transforms data into interpretable results
- Data is presented as an organized, customizable, presentation-ready report that anyone can understand
- Import and analyze up to five replicate result files at one time using the Multi-File XF Cell Mito Stress Test report generator (included in the download), for scalable analysis
- Standardized analysis templates ensure consistent, reproducible data analysis across every XF Cell Mito Stress Test assay kit result file
- Review or reanalyze result data directly in the report generator file without any specialized software programs or licenses, for more efficient collaboration
- Export result data directly to the single-file XF Cell Mito Stress Test report generator using Wave desktop software, for streamlined data analysis
- Supports analysis of XF Cell Mito Stress Test rate data normalized to a cellular or mitochondrial parameter produced on any XF Analyzer

Display Resolution	1280 x 800 (minimum) pixels		
Hard Disk Space Requirements	175 GB		
Memory	4 GB		
Operating System	Windows 7	Windows 8.1	Windows 10
Processor	Intel i3		
Supported Excel Version	Excel 2010 32-bit Excel 2011 64-bit Excel 2016 32-bit	Excel 2010 64-bit Excel 2013 32-bit Excel 2016 64-bit	Excel 2011 32-bit Excel 2013 64-bit

Seahorse XF Glycolytic Rate Assay Report Generators RUO

The Agilent Seahorse XF Glycolytic Rate Assay report generator is required for the analysis of XF Glycolytic Rate Assay data. This quantitative glycolysis data analysis software uses experimentally derived oxygen consumption rate (OCR) and extracellular acidification rate (ECAR) data to automatically calculate the glycolytic proton efflux rate (PER).

The software provides accurate measurements of glycolytic rates for both basal conditions and compensatory glycolysis following mitochondrial inhibition, and enables you to transform raw kinetic data from one or multiple result files into powerful summary reports to simplify your data analysis and interpretation.

For Research Use Only. Not for use in diagnostic procedures.



Features

- Automatic calculation of key parameters of glycolytic function eliminates inefficient and repetitive manual calculations and transforms raw kinetic data into interpretable results
- Data is presented as an organized, customizable, presentation-ready report, summarizing your result data in seconds
- Import and analyze up to five replicate result files at one time using the Multi-File XF Glycolytic Rate Assay report generator (included in the download), for scalable analysis
- Standardized analysis templates, ensure consistent, reproducible data analysis across every XF Glycolytic Rate Assay result file
- Review or reanalyze result data directly in the report generator file without any specialized software programs or licenses, for more efficient collaboration
- Supports analysis of XF Glycolytic Rate Assays, with an acute compound injection (induced protocol), rate data normalized to a cellular or mitochondrial parameter, and rate data produced on Agilent Seahorse XF96, XFe96, XFe24, and XFp Analyzers

Display Resolution	1280 x 800 minimum pixels		
Hard Disk Space Requirements	175 GB		
Memory	4 GB		
Operating System	Windows 7	Windows 8.1	Windows 10
Processor	Intel i3		
Supported Excel Version	Excel 2010 32-bit Excel 2011 64-bit Excel 2016 32-bit	Excel 2010 64-bit Excel 2013 32-bit Excel 2016 64-bit	Excel 2011 32-bit Excel 2013 64-bit

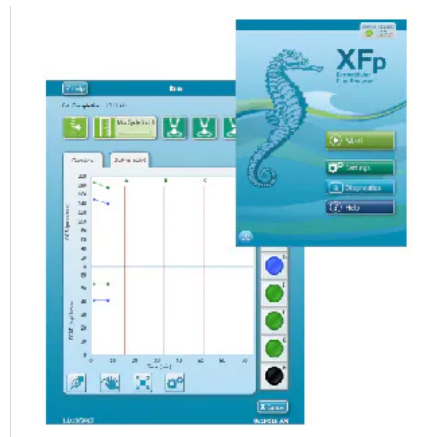
Seahorse XFp Analyzer Software

RUO

Agilent Seahorse XFp Analyzer software is the instrument control and data acquisition software for Agilent Seahorse XFp Analyzers.

This instrument control software provides an intuitive interface with predefined assay templates and streamlined experimental design for simplified metabolic analysis.

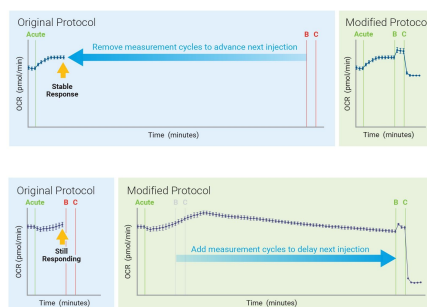
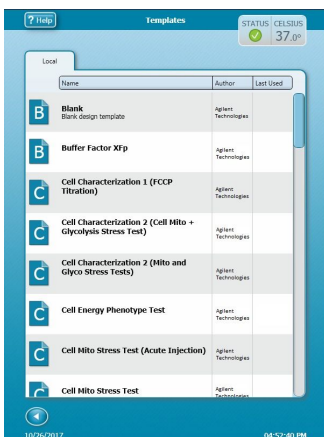
For Research Use Only. Not for use in diagnostic procedures.



Features

- Instrument control software for the Agilent Seahorse XFp Analyzer (Windows 7 OS only)
- Intuitive software interface and touch-friendly controls offer the quickest and simplest assay setup and data acquisition on any XF Analyzer
- Add and remove measurement cycles from your instrument protocol based on real-time result data acquired during an XFp assay
- Stable, accurate temperature performance for XFp assay temperatures between 16–40 °C, enabling metabolic analysis of more diverse sample types
- Predefined assay templates for each Seahorse XF assay kit ensure accurate, consistent experiment setup and simplified analysis
- Configure network access and receive automated system prompts from the XFp Analyzer when user interaction is required and when the assay result file is ready following assay completion

Data Export Format	Microsoft Excel Workbook (32 & 64-bit)	Graphpad Prism
Operating System	Windows 7	



Network Access Features on the XFp Analyzer

	WAN	LAN
Immediate Data Delivery The XFp Analyzer can email your result file immediately after completion of an assay to one or multiple recipients.	✓	✓
File Transfer Made Simple Use a shared network directory to send assay template and result files between the XFp Analyzer and Wave Desktop software	✗	✓
Rapid Remote Assistance Quickly connect with the Agilent Cell Analysis support team for assistance with instrument performance or troubleshooting potential issues	✓	✓
Send system files directly to support Easily collect and send complete system files directly to Agilent Cell Analysis support team on the rare occasion you encounter analyzer performance issues	✓	✓

Seahorse XF Cell Energy Phenotype Test Report Generators

RUO

The Agilent Seahorse XF Cell Energy Phenotype Test report generator software automatically calculates and reports the assay parameters of the Agilent Seahorse XF Cell Energy Phenotype Test kit.

This XF report generator transforms raw kinetic data from one, or multiple result files, into powerful summary reports of relative metabolic phenotype, thereby simplifying your data analysis and interpretation, and eliminating manual, error-prone analysis methods.

For Research Use Only. Not for use in diagnostic procedures.



Features

- Automatic calculation of key parameters of the XF Cell Energy Phenotype Test
- Eliminates inefficient and repetitive manual calculations and transforms raw kinetic data into interpretable results
- Data is presented as an organized, customizable, presentation-ready report that summarizes your data
- Import and analyze up to five replicate result files at one time using the Multi-File XF Cell Energy Phenotype Test report generator (included in the download), for scalable analysis.
- Standardized analysis templates ensure consistent, reproducible data analysis across every XF Cell Energy Phenotype Test assay kit result file.
- Review or reanalyze result data directly in the report generator file without any specialized software programs or licenses, for more efficient collaboration.
- Export result data directly to the single-file XF Cell Energy Phenotype Test report generator using Wave desktop software and streamline your analysis workflow.
- Supports analysis of XF Cell Energy Phenotype Test rate data normalized to a cellular or mitochondrial parameter produced on any XF Analyzer.

Display Resolution	1280 x 800 (minimum) pixels		
Hard Disk Space Requirements	175 GB		
Memory	4 GB		
Operating System	Windows 7	Windows 8.1	Windows 10
Processor	Intel i3		
Supported Excel Version	Excel 2010 32-bit Excel 2011 64-bit Excel 2016 32-bit	Excel 2010 64-bit Excel 2013 32-bit Excel 2016 64-bit	Excel 2011 32-bit Excel 2013 64-bit

Seahorse XF Mito Fuel Flex Test Report Generator RUO

The Agilent Seahorse XF Mito Fuel Flex Test report generator is a software tool that automatically calculates and reports the assay parameters of the Agilent Seahorse XF Mito Fuel Flex Test. This XF report generator transforms raw oxygen consumption rate (OCR) data from a result file into powerful summary reports that detail the percentage dependency and flexibility for each fuel and condition tested.

With this mitochondrial fuel flex report generator, you can simplify your data analysis and interpretation, eliminating manual, error-prone analysis methods.

For Research Use Only. Not for use in diagnostic procedures.



Features

- Automatic calculation of key parameters of the XF Mito Fuel Flex Test transforms raw kinetic data into interpretable results and eliminates inefficient and repetitive manual calculations
- Data is presented as an organized, customizable, presentation-ready report that summarizes your data for anyone to understand
- Standardized analysis templates ensure consistent, reproducible data analysis across every XF Mito Fuel Flex Test kit assay result file
- Review or reanalyze result data directly in the report generator file without any specialized software programs or licenses, for more efficient collaboration
- Export result data directly to the XF Mito Fuel Flex Test report generator using Wave desktop software streamlining your analysis workflow
- Supports analysis of XF Mito Fuel Flex Test rate data normalized to a cellular or mitochondrial parameter produced on any XF Analyzer

Display Resolution	1280 x 800 (minimum) pixels		
Hard Disk Space Requirements	175 GB		
Memory	4 GB		
Operating System	Windows 7	Windows 8.1	Windows 10
Processor	Intel i3		
Supported Excel Version	Excel 2010 32-bit Excel 2011 64-bit Excel 2016 32-bit	Excel 2010 64-bit Excel 2013 32-bit Excel 2016 64-bit	Excel 2011 32-bit Excel 2013 64-bit

По вопросам продаж и поддержки обращайтесь:

Алматы (7273)495-231
Архангельск (8182)63-90-72
Астрахань (8512)99-46-04
Барнаул (3852)73-04-60
Белгород (4722)40-23-64
Брянск (4832)59-03-52
Владивосток (423)249-28-31
Волгоград (844)278-03-48
Вологда (8172)26-41-59
Воронеж (473)204-51-73
Екатеринбург (343)384-55-89
Иваново (4932)77-34-06
Ижевск (3412)26-03-58
Иркутск (395)279-98-46
Россия (495)268-04-70

Казань (843)206-01-48
Калининград (4012)72-03-81
Калуга (4842)92-23-67
Кемерово (3842)65-04-62
Киров (8332)68-02-04
Краснодар (861)203-40-90
Красноярск (391)204-63-61
Курск (4712)77-13-04
Липецк (4742)52-20-81
Магнитогорск (3519)55-03-13
Москва (495)268-04-70
Мурманск (8152)59-64-93
Набережные Челны (8552)20-53-41
Нижний Новгород (831)429-08-12
Киргизия (996)312-96-26-47

Новокузнецк (3843)20-46-81
Новосибирск (383)227-86-73
Омск (3812)21-46-40
Орел (4862)44-53-42
Оренбург (3532)37-68-04
Пенза (8412)22-31-16
Пермь (342)205-81-47
Ростов-на-Дону (863)308-18-15
Рязань (4912)46-61-64
Самара (846)206-03-16
Санкт-Петербург (812)309-46-40
Саратов (845)249-38-78
Севастополь (8692)22-31-93
Симферополь (3652)67-13-56
Казахстан (7172)727-132

Смоленск (4812)29-41-54
Сочи (862)225-72-31
Ставрополь (8652)20-65-13
Сургут (3462)77-98-35
Тверь (4822)63-31-35
Томск (3822)98-41-53
Тула (4872)74-02-29
Тюмень (3452)66-21-18
Ульяновск (8422)24-23-59
Уфа (347)229-48-12
Хабаровск (4212)92-98-04
Челябинск (351)202-03-61
Череповец (8202)49-02-64
Ярославль (4852)69-52-93